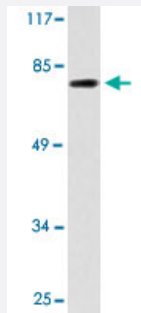


TACC3 polyclonal antibody

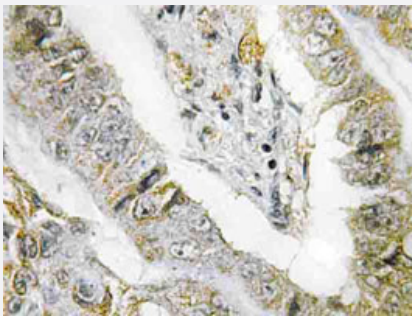
Catalog # PAB26930 Size 100 uL

Applications



Western Blot (Cell lysate)

Western blot analysis of 293 cell lysate with TACC3 polyclonal antibody (Cat # PAB26930).



Immunohistochemistry (Formalin/PFA-fixed paraffin-embedded sections)

Immunohistochemical analysis of paraffin-embedded human lung cancer tissue using TACC3 polyclonal antibody (Cat # PAB26930).

Specification

Product Description	Rabbit polyclonal antibody raised against synthetic peptide of TACC3.
Immunogen	A synthetic peptide corresponding to human TACC3.
Host	Rabbit
Theoretical MW (kDa)	80
Reactivity	Human, Mouse
Specificity	TACC3 polyclonal antibody detects endogenous levels of TACC3 protein.
Form	Liquid

Purification	Affinity purification
Concentration	1 mg/mL
Recommend Usage	Western Blot (1:500-1:1000) Immunohistochemistry (1:50-1:200) Immunofluorescence (1:50-1:200) The optimal working dilution should be determined by the end user.
Storage Buffer	In PBS, pH 7.2 (0.05% sodium azide)
Storage Instruction	Store at 4°C. For long term storage store at -20°C. Aliquot to avoid repeated freezing and thawing.
Note	This product contains sodium azide: a POISONOUS AND HAZARDOUS SUBSTANCE which should be handled by trained staff only.

Applications

- Western Blot (Cell lysate)

Western blot analysis of 293 cell lysate with TACC3 polyclonal antibody (Cat # PAB26930).

- Immunohistochemistry (Formalin/PFA-fixed paraffin-embedded sections)

Immunohistochemical analysis of paraffin-embedded human lung cancer tissue using TACC3 polyclonal antibody (Cat # PAB26930).

- Immunofluorescence

Gene Info — TACC3

Entrez GeneID	10460
Protein Accession#	Q9Y6A5
Gene Name	TACC3
Gene Alias	ERIC1, MGC117382, MGC133242
Gene Description	transforming, acidic coiled-coil containing protein 3
Omim ID	605303
Gene Ontology	Hyperlink

Gene Summary

The function of this gene has not yet been determined; however, it is speculated that it may be involved in cell growth and differentiation. Expression of this gene is up-regulated in some cancer cell lines, and in embryonic day 15 in mice. [provided by RefSeq]

Other Designations

-

Disease

- [Adenocarcinoma](#)
- [Genetic Predisposition to Disease](#)
- [Kidney Failure](#)
- [Pancreatic Neoplasms](#)
- [Recurrence](#)
- [Urinary Bladder Neoplasms](#)