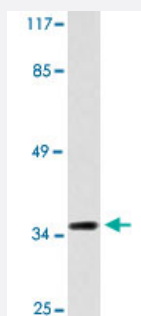


LGALS8 polyclonal antibody

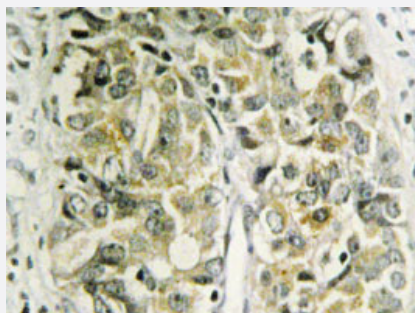
Catalog # PAB26923 Size 100 uL

Applications



Western Blot (Cell lysate)

Western blot analysis of NIH/3T3 cell lysate with LGALS8 polyclonal antibody (Cat # PAB26923).



Immunohistochemistry (Formalin/PFA-fixed paraffin-embedded sections)

Immunohistochemical analysis of paraffin-embedded human prostate cancer tissue using LGALS8 polyclonal antibody (Cat # PAB26923).

Specification

Product Description	Rabbit polyclonal antibody raised against synthetic peptide of LGALS8.
Immunogen	A synthetic peptide corresponding to human LGALS8.
Host	Rabbit
Theoretical MW (kDa)	36
Reactivity	Human, Mouse
Specificity	LGALS8 polyclonal antibody detects endogenous levels of LGALS8 protein.
Form	Liquid

Purification	Affinity purification
Concentration	1 mg/mL
Recommend Usage	Western Blot (1:500-1:1000) Immunohistochemistry (1:50-1:200) Immunofluorescence (1:50-1:200) The optimal working dilution should be determined by the end user.
Storage Buffer	In PBS, pH 7.2 (0.05% sodium azide)
Storage Instruction	Store at 4°C. For long term storage store at -20°C. Aliquot to avoid repeated freezing and thawing.
Note	This product contains sodium azide: a POISONOUS AND HAZARDOUS SUBSTANCE which should be handled by trained staff only.

Applications

- Western Blot (Cell lysate)

Western blot analysis of NIH/3T3 cell lysate with LGALS8 polyclonal antibody (Cat # PAB26923).

- Immunohistochemistry (Formalin/PFA-fixed paraffin-embedded sections)

Immunohistochemical analysis of paraffin-embedded human prostate cancer tissue using LGALS8 polyclonal antibody (Cat # PAB26923).

- Immunofluorescence

Gene Info — LGALS8

Entrez GeneID	3964
Protein Accession#	O00214
Gene Name	LGALS8
Gene Alias	Gal-8, PCTA-1, PCTA1, Po66-CBP
Gene Description	lectin, galactoside-binding, soluble, 8
Omim ID	606099
Gene Ontology	Hyperlink

Gene Summary

This gene encodes a member of the galectin family. Galectins are beta-galactoside-binding animal lectins with conserved carbohydrate recognition domains. The galectins have been implicated in many essential functions including development, differentiation, cell-cell adhesion, cell-matrix interaction, growth regulation, apoptosis, and RNA splicing. This gene is widely expressed in tumor tissues and seems to be involved in integrin-like cell interactions. Alternatively spliced transcript variants encoding different isoforms have been identified. [provided by RefSeq]

Other Designations

OTTHUMP00000037854|Po66 carbohydrate binding protein|galectin 8|galectin-8|galectin-8g|prostate carcinoma tumor antigen 1