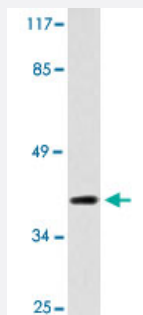


# DOK6 polyclonal antibody

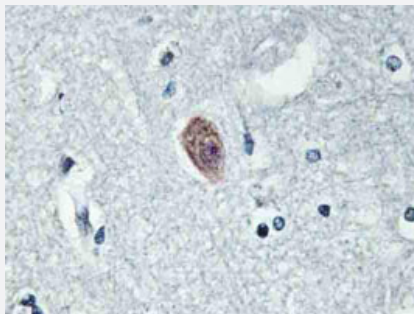
Catalog # PAB26918      Size 100 uL

## Applications



### Western Blot (Cell lysate)

Western blot analysis of COLO 205 cell lysate with DOK6 polyclonal antibody (Cat # PAB26918).



### Immunohistochemistry (Formalin/PFA-fixed paraffin-embedded sections)

Immunohistochemical analysis of paraffin-embedded human brain tissue using DOK6 polyclonal antibody (Cat # PAB26918).

## Specification

<b>Product Description</b>	Rabbit polyclonal antibody raised against synthetic peptide of DOK6.
<b>Immunogen</b>	A synthetic peptide corresponding to human DOK6.
<b>Host</b>	Rabbit
<b>Theoretical MW (kDa)</b>	43
<b>Reactivity</b>	Human, Mouse
<b>Specificity</b>	DOK6 polyclonal antibody detects endogenous levels of DOK6 protein.
<b>Form</b>	Liquid

<b>Purification</b>	Affinity purification
<b>Concentration</b>	1 mg/mL
<b>Recommend Usage</b>	Western Blot (1:500-1:1000) Immunohistochemistry (1:50-1:200) Immunofluorescence (1:50-1:200) The optimal working dilution should be determined by the end user.
<b>Storage Buffer</b>	In PBS, pH 7.2 (0.05% sodium azide)
<b>Storage Instruction</b>	Store at 4°C. For long term storage store at -20°C. Aliquot to avoid repeated freezing and thawing.
<b>Note</b>	This product contains sodium azide: a POISONOUS AND HAZARDOUS SUBSTANCE which should be handled by trained staff only.

## Applications

- Western Blot (Cell lysate)

Western blot analysis of COLO 205 cell lysate with DOK6 polyclonal antibody (Cat # PAB26918).

- Immunohistochemistry (Formalin/PFA-fixed paraffin-embedded sections)

Immunohistochemical analysis of paraffin-embedded human brain tissue using DOK6 polyclonal antibody (Cat # PAB26918).

- Immunofluorescence

## Gene Info — DOK6

<b>Entrez GeneID</b>	<a href="#">220164</a>
<b>Protein Accession#</b>	<a href="#">Q6PKX4</a>
<b>Gene Name</b>	DOK6
<b>Gene Alias</b>	DOK5L, HsT3226, MGC20785
<b>Gene Description</b>	docking protein 6
<b>Omim ID</b>	<a href="#">611402</a>
<b>Gene Ontology</b>	<a href="#">Hyperlink</a>

**Gene Summary**

DOK6 is a member of the DOK (see DOK1; MIM 602919) family of intracellular adaptors that play a role in the RET (MIM 164761) signaling cascade (Crowder et al., 2004 [PubMed 15286081]).[s  
upplied by OMIM

**Other Designations**

docking protein 5-like

## Disease

- [Disease Progression](#)
- [Disease Susceptibility](#)
- [HIV Infections](#)
- [Tobacco Use Disorder](#)