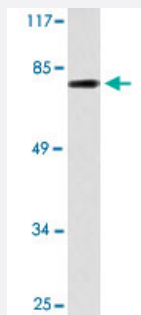


FES polyclonal antibody

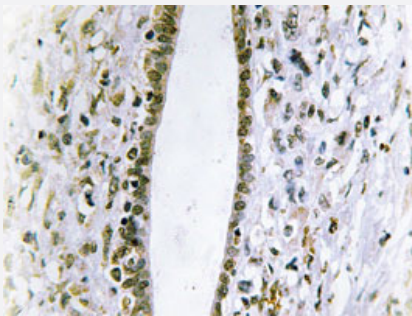
Catalog # PAB26915 Size 100 uL

Applications



Western Blot (Cell lysate)

Western blot analysis of HUVEC cell lysate treated with serum 20%, 30'. Using FES polyclonal antibody (Cat # PAB26915).



Immunohistochemistry (Formalin/PFA-fixed paraffin-embedded sections)

Immunohistochemical analysis of paraffin-embedded human liver carcinoma tissue using FES polyclonal antibody (Cat # PAB26915).

Specification

Product Description	Rabbit polyclonal antibody raised against synthetic peptide of FES.
Immunogen	A synthetic peptide corresponding to human FES.
Host	Rabbit
Theoretical MW (kDa)	80
Reactivity	Human, Mouse
Specificity	FES polyclonal antibody detects endogenous levels of FES protein.
Form	Liquid

Purification	Affinity purification
Concentration	1 mg/mL
Recommend Usage	Western Blot (1:500-1:1000) Immunohistochemistry (1:50-1:200) The optimal working dilution should be determined by the end user.
Storage Buffer	In PBS, pH 7.2 (0.05% sodium azide)
Storage Instruction	Store at 4°C. For long term storage store at -20°C. Aliquot to avoid repeated freezing and thawing.
Note	This product contains sodium azide: a POISONOUS AND HAZARDOUS SUBSTANCE which should be handled by trained staff only.

Applications

- Western Blot (Cell lysate)

Western blot analysis of HUVEC cell lysate treated with serum 20%, 30'. Using FES polyclonal antibody (Cat # PAB26915).

- Immunohistochemistry (Formalin/PFA-fixed paraffin-embedded sections)

Immunohistochemical analysis of paraffin-embedded human liver carcinoma tissue using FES polyclonal antibody (Cat # PAB26915).

Gene Info — FES

Entrez GeneID	2242
Protein Accession#	P07332
Gene Name	FES
Gene Alias	FPS
Gene Description	feline sarcoma oncogene
Omim ID	190030
Gene Ontology	Hyperlink

Gene Summary

This gene encodes the human cellular counterpart of a feline sarcoma retrovirus protein with transforming capabilities. The gene product has tyrosine-specific protein kinase activity and that activity is required for maintenance of cellular transformation. Its chromosomal location has linked it to a specific translocation event identified in patients with acute promyelocytic leukemia but it is also involved in normal hematopoiesis as well as growth factor and cytokine receptor signaling. Alternative splicing results in multiple variants encoding different isoforms

Other Designations

Oncogene FES, feline sarcoma virus|c-fes/fps protein|feline sarcoma (Snyder-Theilen) viral (v-fes)/Fujinami avian sarcoma (PRCII) viral (v-fps) oncogene homolog|proto-oncogene tyrosine-protein kinase Fes/Fps

Pathway

- [Axon guidance](#)

Disease

- [Cardiovascular Diseases](#)
- [Diabetes Mellitus](#)
- [Edema](#)
- [Leukemia](#)
- [Lymphoproliferative Disorders](#)
- [Myelodysplastic Syndromes](#)