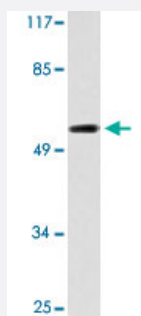


MAPK15 polyclonal antibody

Catalog # PAB26909 Size 100 uL

Applications



Western Blot (Cell lysate)

Western blot analysis of HepG2 cell lysate with MAPK15 polyclonal antibody (Cat # PAB26909).

Specification

Product Description	Rabbit polyclonal antibody raised against synthetic peptide of MAPK15.
Immunogen	A synthetic peptide corresponding to human MAPK15.
Host	Rabbit
Theoretical MW (kDa)	60
Reactivity	Human, Mouse
Specificity	MAPK15 polyclonal antibody detects endogenous levels of MAPK15 protein.
Form	Liquid
Purification	Affinity purification
Concentration	1 mg/mL
Recommend Usage	Western Blot (1:500-1:1000) Immunohistochemistry (1:50-1:200) Immunofluorescence (1:50-1:200) The optimal working dilution should be determined by the end user.

Storage Buffer	In PBS, pH 7.2 (0.05% sodium azide)
Storage Instruction	Store at 4°C. For long term storage store at -20°C. Aliquot to avoid repeated freezing and thawing.
Note	This product contains sodium azide: a POISONOUS AND HAZARDOUS SUBSTANCE which should be handled by trained staff only.

Applications

- Western Blot (Cell lysate)

Western blot analysis of HepG2 cell lysate with MAPK15 polyclonal antibody (Cat # PAB26909).

- Immunohistochemistry

- Immunofluorescence

Gene Info — MAPK15

Entrez GeneID	225689
Protein Accession#	Q8TD08
Gene Name	MAPK15
Gene Alias	ERK7, ERK8
Gene Description	mitogen-activated protein kinase 15
Gene Ontology	Hyperlink
Other Designations	OTTHUMP00000189334 extracellular regulated kinase 8 delta extracellular signal regulated kinase 8 extracellular signal-regulated kinase 8