

TRA2A polyclonal antibody

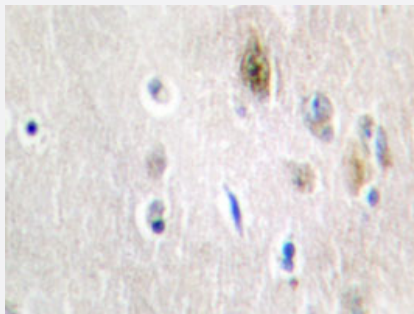
Catalog # PAB26894 Size 100 uL

Applications



Western Blot (Cell lysate)

Western blot analysis of COS-7 cell lysate with TRA2A polyclonal antibody (Cat # PAB26894).



Immunohistochemistry (Formalin/PFA-fixed paraffin-embedded sections)

Immunohistochemical analysis of paraffin-embedded human brain tissue using TRA2A polyclonal antibody (Cat # PAB26894).

Specification

Product Description	Rabbit polyclonal antibody raised against synthetic peptide of TRA2A.
Immunogen	A synthetic peptide corresponding to human TRA2A.
Host	Rabbit
Theoretical MW (kDa)	33
Reactivity	Human, Mouse
Specificity	TRA2A polyclonal antibody detects endogenous levels of TRA2A protein.
Form	Liquid

Purification	Affinity purification
Concentration	1 mg/mL
Recommend Usage	Western Blot (1:500-1:1000) Immunohistochemistry (1:50-1:200) Immunofluorescence (1:50-1:200) The optimal working dilution should be determined by the end user.
Storage Buffer	In PBS, pH 7.2 (0.05% sodium azide)
Storage Instruction	Store at 4°C. For long term storage store at -20°C. Aliquot to avoid repeated freezing and thawing.
Note	This product contains sodium azide: a POISONOUS AND HAZARDOUS SUBSTANCE which should be handled by trained staff only.

Applications

- Western Blot (Cell lysate)

Western blot analysis of COS-7 cell lysate with TRA2A polyclonal antibody (Cat # PAB26894).

- Immunohistochemistry (Formalin/PFA-fixed paraffin-embedded sections)

Immunohistochemical analysis of paraffin-embedded human brain tissue using TRA2A polyclonal antibody (Cat # PAB26894).

- Immunofluorescence

Gene Info — TRA2A

Entrez GeneID	29896
Protein Accession#	Q13595
Gene Name	TRA2A
Gene Alias	HSU53209
Gene Description	transformer-2 alpha
Omim ID	602718
Gene Ontology	Hyperlink

Gene Summary

This gene is a member of the transformer 2 homolog family and encodes a protein with two RS domains and an RRM (RNA recognition motif) domain. This phosphorylated nuclear protein binds to specific RNA sequences and plays a role in the regulation of pre-mRNA splicing. Several alternatively spliced transcript variants of this gene have been described; however, the full-length nature of some of these variants has not been determined. [provided by RefSeq]

Other Designations

Tra2alpha|htra-2 alpha|putative MAPK activating protein PM24