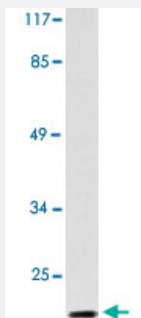


CKS1B polyclonal antibody

Catalog # PAB26892 Size 100 uL

Applications



Western Blot (Cell lysate)

Western blot analysis of Jurkat cell lysate treated with serum 20%, 15'. Using CKS1B polyclonal antibody (Cat # PAB26892).

Specification

Product Description	Rabbit polyclonal antibody raised against synthetic peptide of CKS1B.
Immunogen	A synthetic peptide corresponding to human CKS1B.
Host	Rabbit
Theoretical MW (kDa)	9
Reactivity	Human, Mouse
Specificity	CKS1B polyclonal antibody detects endogenous levels of CKS1B protein.
Form	Liquid
Purification	Affinity purification
Concentration	1 mg/mL
Recommend Usage	Western Blot (1:500-1:1000) The optimal working dilution should be determined by the end user.
Storage Buffer	In PBS, pH 7.2 (0.05% sodium azide)

Storage Instruction

Store at 4°C. For long term storage store at -20°C.
Aliquot to avoid repeated freezing and thawing.

Note

This product contains sodium azide: a POISONOUS AND HAZARDOUS SUBSTANCE which should be handled by trained staff only.

Applications

- Western Blot (Cell lysate)

Western blot analysis of Jurkat cell lysate treated with serum 20%, 15'. Using CKS1B polyclonal antibody (Cat # PAB26892).

- Immunofluorescence

Gene Info — CKS1B

Entrez GeneID[1163](#)**Protein Accession#**[P61024](#)**Gene Name**

CKS1B

Gene Alias

CKS1, PNAS-16, PNAS-18, ckshs1

Gene Description

CDC28 protein kinase regulatory subunit 1B

Omim ID[116900](#)**Gene Ontology**[Hyperlink](#)**Gene Summary**

CKS1B protein binds to the catalytic subunit of the cyclin dependent kinases and is essential for their biological function. The CKS1B mRNA is found to be expressed in different patterns throughout the cell cycle in HeLa cells, which reflects a specialized role for the encoded protein. At least two transcript variants have been identified for this gene, and it appears that only one of them encodes a protein. [provided by RefSeq]

Other Designations

CDC2-associated protein CKS1|CDC28 protein kinase 1|CDC28 protein kinase 1B|NB4 apoptosis/differentiation related protein|OTTHUMP00000035541|PNAS-143|cell division control protein CKS1|cyclin-dependent kinases regulatory subunit 1

Pathway

- [Pathways in cancer](#)

- [Small cell lung cancer](#)

Disease

- [Tobacco Use Disorder](#)