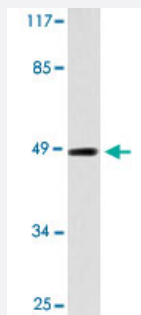


# TMPRSS3 polyclonal antibody

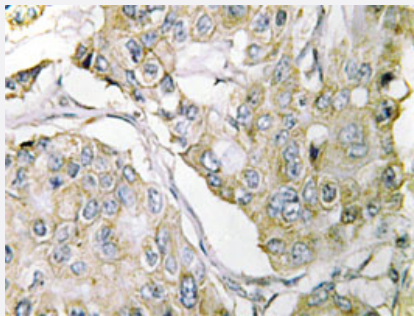
Catalog # PAB26891      Size 100 uL

## Applications



### Western Blot (Cell lysate)

Western blot analysis of HUVEC cell lysate with TMPRSS3 polyclonal antibody (Cat # PAB26891).



### Immunohistochemistry (Formalin/PFA-fixed paraffin-embedded sections)

Immunohistochemical analysis of paraffin-embedded human breast cancer tissue using TMPRSS3 polyclonal antibody (Cat # PAB26891).

## Specification

<b>Product Description</b>	Rabbit polyclonal antibody raised against synthetic peptide of TMPRSS3.
<b>Immunogen</b>	A synthetic peptide corresponding to human TMPRSS3.
<b>Host</b>	Rabbit
<b>Theoretical MW (kDa)</b>	49
<b>Reactivity</b>	Human, Mouse
<b>Specificity</b>	TMPRSS3 polyclonal antibody detects endogenous levels of TMPRSS3 protein.
<b>Form</b>	Liquid

Purification	Affinity purification
Concentration	1 mg/mL
Recommend Usage	Western Blot (1:500-1:1000) Immunohistochemistry (1:50-1:200) Immunofluorescence (1:50-1:200) The optimal working dilution should be determined by the end user.
Storage Buffer	In PBS, pH 7.2 (0.05% sodium azide)
Storage Instruction	Store at 4°C. For long term storage store at -20°C. Aliquot to avoid repeated freezing and thawing.
Note	This product contains sodium azide: a POISONOUS AND HAZARDOUS SUBSTANCE which should be handled by trained staff only.

## Applications

- Western Blot (Cell lysate)

Western blot analysis of HUVEC cell lysate with TMPRSS3 polyclonal antibody (Cat # PAB26891).

- Immunohistochemistry (Formalin/PFA-fixed paraffin-embedded sections)

Immunohistochemical analysis of paraffin-embedded human breast cancer tissue using TMPRSS3 polyclonal antibody (Cat # PAB26891).

- Immunofluorescence

## Gene Info — TMPRSS3

Entrez GeneID	<a href="#">64699</a>
Protein Accession#	<a href="#">P57727</a>
Gene Name	TMPRSS3
Gene Alias	DFNB10, DFNB8, ECHOS1, TADG12
Gene Description	transmembrane protease, serine 3
Omim ID	<a href="#">601072</a> <a href="#">605316</a> <a href="#">605511</a>
Gene Ontology	<a href="#">Hyperlink</a>

**Gene Summary**

This gene encodes a protein that belongs to the serine protease family. The encoded protein contains a serine protease domain, a transmembrane domain, a LDL receptor-like domain, and a scavenger receptor cysteine-rich domain. Serine proteases are known to be involved in a variety of biological processes, whose malfunction often leads to human diseases and disorders. This gene was identified by its association with both congenital and childhood onset autosomal recessive deafness. This gene is expressed in fetal cochlea and many other tissues, and is thought to be involved in the development and maintenance of the inner ear or the contents of the perilymph and endolymph. This gene was also identified as a tumor associated gene that is overexpressed in ovarian tumors. Alternatively spliced transcript variants have been described. [provided by RefSeq]

**Other Designations**

OTTHUMP00000109345|serine protease TADG12

**Disease**

- [Deafness](#)
- [Syndrome](#)