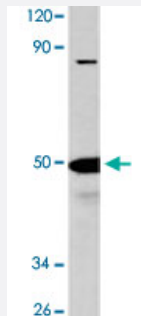


# LTBR polyclonal antibody

Catalog # PAB26889      Size 100 uL

## Applications



### Western Blot (Cell lysate)

Western blot analysis of HeLa cell lysate with LTBR polyclonal antibody (Cat # PAB26889) at 1:500 dilution.

## Specification

<b>Product Description</b>	Rabbit polyclonal antibody raised against synthetic peptide of LTBR.
<b>Immunogen</b>	A synthetic peptide corresponding to human LTBR.
<b>Host</b>	Rabbit
<b>Theoretical MW (kDa)</b>	~50.0
<b>Reactivity</b>	Human, Mouse
<b>Specificity</b>	LTBR polyclonal antibody detects endogenous levels of LTBR protein.
<b>Form</b>	Liquid
<b>Purification</b>	Affinity purification
<b>Recommend Usage</b>	Western Blot (1:500-1:1000) Immunofluorescence (1:50-1:200) The optimal working dilution should be determined by the end user.
<b>Storage Buffer</b>	In PBS, pH 7.2 (0.09% sodium azide)

**Storage Instruction**

Store at 4°C. For long term storage store at -20°C.  
Aliquot to avoid repeated freezing and thawing.

**Note**

This product contains sodium azide: a POISONOUS AND HAZARDOUS SUBSTANCE which should be handled by trained staff only.

## Applications

- Western Blot (Cell lysate)

Western blot analysis of HeLa cell lysate with LTBR polyclonal antibody (Cat # PAB26889) at 1:500 dilution.

- Immunofluorescence

## Gene Info — LTBR

**Entrez GeneID**[4055](#)**Protein Accession#**[P36941](#)**Gene Name**

LTBR

**Gene Alias**

D12S370, LT-BETA-R, TNF-R-III, TNFCR, TNFR-RP, TNFR2-RP, TNFRSF3

**Gene Description**

lymphotoxin beta receptor (TNFR superfamily, member 3)

**Omim ID**[600979](#)**Gene Ontology**[Hyperlink](#)**Gene Summary**

The protein encoded by this gene is a member of the tumor necrosis factor (TNF) family of receptors. It is expressed on the surface of most cell types, including cells of epithelial and myeloid lineages, but not on T and B lymphocytes. The protein specifically binds the lymphotoxin membrane form (a complex of lymphotoxin-alpha and lymphotoxin-beta). The encoded protein and its ligand play a role in the development and organization of lymphoid tissue and transformed cells. Activation of the encoded protein can trigger apoptosis. [provided by RefSeq]

**Other Designations**

TNFR superfamily, member 3|lymphotoxin B receptor|lymphotoxin beta receptor|tumor necrosis factor C receptor|tumor necrosis factor receptor superfamily, member 3

## Pathway

- [Cytokine-cytokine receptor interaction](#)

## Disease

- [Birth Weight](#)
- [Genetic Predisposition to Disease](#)
- [Glioblastoma](#)
- [Glioma](#)
- [Hematologic Diseases](#)
- [Leukemia](#)
- [Meningeal Neoplasms](#)
- [Meningioma](#)
- [Multiple Myeloma](#)
- [Occupational Diseases](#)