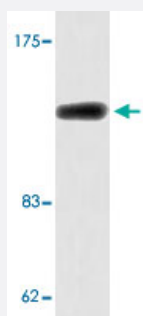


# MAP4K4 polyclonal antibody

Catalog # PAB26885      Size 100 uL

## Applications



### Western Blot (Cell lysate)

Western blot analysis of HUVEC cell lysate with MAP4K4 polyclonal antibody (Cat # PAB26885).

## Specification

<b>Product Description</b>	Rabbit polyclonal antibody raised against synthetic peptide of MAP4K4.
<b>Immunogen</b>	A synthetic peptide corresponding to human MAP4K4.
<b>Host</b>	Rabbit
<b>Theoretical MW (kDa)</b>	142
<b>Reactivity</b>	Human, Mouse
<b>Specificity</b>	MAP4K4 polyclonal antibody detects endogenous levels of MAP4K4 protein.
<b>Form</b>	Liquid
<b>Purification</b>	Affinity purification
<b>Concentration</b>	1 mg/mL
<b>Recommend Usage</b>	Western Blot (1:500-1:1000) Immunofluorescence (1:50-1:200) The optimal working dilution should be determined by the end user.
<b>Storage Buffer</b>	In PBS, pH 7.2 (0.05% sodium azide)

**Storage Instruction**

Store at 4°C. For long term storage store at -20°C.  
Aliquot to avoid repeated freezing and thawing.

**Note**

This product contains sodium azide: a POISONOUS AND HAZARDOUS SUBSTANCE which should be handled by trained staff only.

## Applications

- Western Blot (Cell lysate)

Western blot analysis of HUVEC cell lysate with MAP4K4 polyclonal antibody (Cat # PAB26885).

- Immunofluorescence

## Gene Info — MAP4K4

**Entrez GeneID**[9448](#)**Protein Accession#**[O95819](#)**Gene Name**

MAP4K4

**Gene Alias**

FLH21957, FLJ10410, FLJ20373, FLJ90111, HGK, KIAA0687, NIK

**Gene Description**

mitogen-activated protein kinase kinase kinase kinase 4

**Omim ID**[604666](#)**Gene Ontology**[Hyperlink](#)**Gene Summary**

The protein encoded by this gene is a member of the serine/threonine protein kinase family. This kinase has been shown to specifically activate MAPK8/JNK. The activation of MAPK8 by this kinase is found to be inhibited by the dominant-negative mutants of MAP3K7/TAK1, MAP2K4/MKK4, and MAP2K7/MKK7, which suggests that this kinase may function through the MAP3K7-MAP2K4-MAP2K7 kinase cascade, and mediate the TNF-alpha signaling pathway. Alternatively spliced transcript variants encoding different isoforms have been identified. [provided by RefSeq]

**Other Designations**

HPK/GCK-like kinase|hepatocyte progenitor kinase-like/germinal center kinase-like kinase

## Pathway

- [MAPK signaling pathway](#)