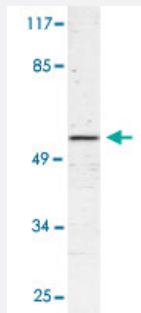


# TRIM38 polyclonal antibody

Catalog # PAB26882      Size 100 uL

## Applications



### Western Blot

Western blot analysis of Raw 264.7 cell lysate with TRIM38 polyclonal antibody (Cat # PAB26882).

## Specification

<b>Product Description</b>	Rabbit polyclonal antibody raised against synthetic peptide of TRIM38.
<b>Immunogen</b>	A synthetic peptide corresponding to human TRIM38.
<b>Host</b>	Rabbit
<b>Theoretical MW (kDa)</b>	58
<b>Reactivity</b>	Human, Mouse
<b>Specificity</b>	TRIM38 polyclonal antibody detects endogenous levels of TRIM38 protein.
<b>Form</b>	Liquid
<b>Purification</b>	Affinity purification
<b>Concentration</b>	1 mg/mL
<b>Recommend Usage</b>	Western Blot (1:500-1:1000) The optimal working dilution should be determined by the end user.
<b>Storage Buffer</b>	In PBS, pH 7.2 (0.05% sodium azide)

**Storage Instruction**

Store at 4°C. For long term storage store at -20°C.  
Aliquot to avoid repeated freezing and thawing.

**Note**

This product contains sodium azide: a POISONOUS AND HAZARDOUS SUBSTANCE which should be handled by trained staff only.

## Applications

- Western Blot

Western blot analysis of Raw 264.7 cell lysate with TRIM38 polyclonal antibody (Cat # PAB26882).

## Gene Info — TRIM38

**Entrez GeneID**[10475](#)**Protein Accession#**[O00635](#)**Gene Name**

TRIM38

**Gene Alias**

MGC8946, RNF15, RORET

**Gene Description**

tripartite motif-containing 38

**Gene Ontology**[Hyperlink](#)**Gene Summary**

The protein encoded by this gene is a member of the tripartite motif (TRIM) family. The TRIM motif includes three zinc-binding domains, a RING, a B-box type 1 and a B-box type 2, and a coiled-coil region. The function of this protein has not been identified. [provided by RefSeq]

**Other Designations**

OTTHUMP00000016131|Ro/SSA ribonucleoprotein homolog|ring finger protein 15|zinc-finger protein RoRet