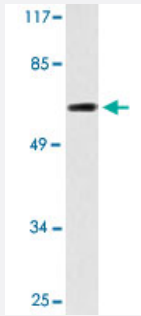


CABLES1 polyclonal antibody

Catalog # PAB26881 Size 100 uL

Applications



Western Blot (Cell lysate)

Western blot analysis of LoVo cell lysate with CABLES1 polyclonal antibody (Cat # PAB26881).

Specification

Product Description	Rabbit polyclonal antibody raised against synthetic peptide of CABLES1.
Immunogen	A synthetic peptide corresponding to human CABLES1.
Host	Rabbit
Theoretical MW (kDa)	67
Reactivity	Human, Mouse
Specificity	CABLES1 polyclonal antibody detects endogenous levels of CABLES1 protein.
Form	Liquid
Purification	Affinity purification
Concentration	1 mg/mL
Recommend Usage	Western Blot (1:500-1:1000) Immunohistochemistry (1:50-1:200) Immunofluorescence (1:50-1:200) The optimal working dilution should be determined by the end user.

Storage Buffer	In PBS, pH 7.2 (0.05% sodium azide)
Storage Instruction	Store at 4°C. For long term storage store at -20°C. Aliquot to avoid repeated freezing and thawing.
Note	This product contains sodium azide: a POISONOUS AND HAZARDOUS SUBSTANCE which should be handled by trained staff only.

Applications

- Western Blot (Cell lysate)

Western blot analysis of LoVo cell lysate with CABLES1 polyclonal antibody (Cat # PAB26881).

- Immunohistochemistry

- Immunofluorescence

Gene Info — CABLES1

Entrez GeneID	91768
Protein Accession#	Q8TDN4
Gene Name	CABLES1
Gene Alias	CABLES, FLJ35924, HsT2563, IK3-1
Gene Description	Cdk5 and Abl enzyme substrate 1
Omim ID	609194
Gene Ontology	Hyperlink
Gene Summary	CABLES1 is a cyclin-dependent kinase (CDK)-binding protein that plays a role in proliferation and/or differentiation (Zukerberg et al., 2004 [PubMed 14729625]).[supplied by OMIM]
Other Designations	-

Disease

- [Diabetes Mellitus](#)