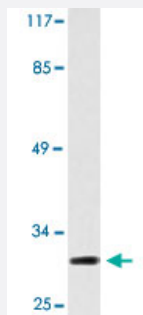


ELF5 polyclonal antibody

Catalog # PAB26879 Size 100 uL

Applications



Western Blot (Cell lysate)

Western blot analysis of Jurkat cell lysate with ELF5 polyclonal antibody (Cat # PAB26879).

Specification

Product Description	Rabbit polyclonal antibody raised against synthetic peptide of ELF5.
Immunogen	A synthetic peptide corresponding to human ELF5.
Host	Rabbit
Theoretical MW (kDa)	31
Reactivity	Human, Mouse
Specificity	ELF5 polyclonal antibody detects endogenous levels of ELF5 protein.
Form	Liquid
Purification	Affinity purification
Concentration	1 mg/mL
Recommend Usage	Western Blot (1:500-1:1000) Immunofluorescence (1:50-1:200) The optimal working dilution should be determined by the end user.
Storage Buffer	In PBS, pH 7.2 (0.05% sodium azide)

Storage Instruction

Store at 4°C. For long term storage store at -20°C.
Aliquot to avoid repeated freezing and thawing.

Note

This product contains sodium azide: a POISONOUS AND HAZARDOUS SUBSTANCE which should be handled by trained staff only.

Applications

- Western Blot (Cell lysate)

Western blot analysis of Jurkat cell lysate with ELF5 polyclonal antibody (Cat # PAB26879).

- Immunofluorescence

Gene Info — ELF5

Entrez GeneID [2001](#)

Protein Accession# [Q9UKW6](#)

Gene Name ELF5

Gene Alias ESE2

Gene Description E74-like factor 5 (ets domain transcription factor)

Omim ID [605169](#)

Gene Ontology [Hyperlink](#)

Gene Summary The protein encoded by this gene is a member of an epithelium-specific subclass of the Ets transcription factor family. In addition to its role in regulating the later stages of terminal differentiation of keratinocytes, it appears to regulate a number of epithelium-specific genes found in tissues containing glandular epithelium such as salivary gland and prostate. It has very low affinity to DNA due to its negative regulatory domain at the amino terminus. Two alternatively spliced transcript variants encoding different isoforms have been described for this gene. [provided by RefSeq]

Other Designations E74-like factor 5|epithelium-specific Ets transcription factor 2

Disease

- [Asthma](#)
- [Genetic Predisposition to Disease](#)