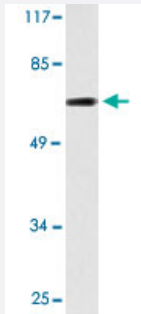


# DCP1A polyclonal antibody

Catalog # PAB26877      Size 100 uL

## Applications



### Western Blot (Cell lysate)

Western blot analysis of Jurkat cell lysate with DCP1A polyclonal antibody (Cat # PAB26877).

## Specification

<b>Product Description</b>	Rabbit polyclonal antibody raised against synthetic peptide of DCP1A.
<b>Immunogen</b>	A synthetic peptide corresponding to human DCP1A.
<b>Host</b>	Rabbit
<b>Theoretical MW (kDa)</b>	75
<b>Reactivity</b>	Human, Mouse
<b>Specificity</b>	DCP1A polyclonal antibody detects endogenous levels of DCP1A protein.
<b>Form</b>	Liquid
<b>Purification</b>	Affinity purification
<b>Concentration</b>	1 mg/mL
<b>Recommend Usage</b>	Western Blot (1:500-1:1000) Immunohistochemistry (1:50-1:200) The optimal working dilution should be determined by the end user.
<b>Storage Buffer</b>	In PBS, pH 7.2 (0.05% sodium azide)

**Storage Instruction**

Store at 4°C. For long term storage store at -20°C.  
Aliquot to avoid repeated freezing and thawing.

**Note**

This product contains sodium azide: a POISONOUS AND HAZARDOUS SUBSTANCE which should be handled by trained staff only.

## Applications

- Western Blot (Cell lysate)

Western blot analysis of Jurkat cell lysate with DCP1A polyclonal antibody (Cat # PAB26877).

- Immunohistochemistry

## Gene Info — DCP1A

**Entrez GeneID**[55802](#)**Protein Accession#**[Q9NPI6](#)**Gene Name**

DCP1A

**Gene Alias**

FLJ21691, HSA275986, Nbla00360, SMAD4IP1, SMIF

**Gene Description**

DCP1 decapping enzyme homolog A (S. cerevisiae)

**Omim ID**[607010](#)**Gene Ontology**[Hyperlink](#)**Gene Summary**

Decapping is a key step in general and regulated mRNA decay. The protein encoded by this gene is a decapping enzyme. This protein and another decapping enzyme form a decapping complex, which interacts with the nonsense-mediated decay factor hUpf1 and may be recruited to mRNAs containing premature termination codons. This protein also participates in the TGF-beta signaling pathway. [provided by RefSeq]

**Other Designations**

DCP1 decapping enzyme homolog A|Smad4-interacting transcriptional co-activator|decapping enzyme hDcp1a|putative protein product of Nbla00360|transcription factor SMIF

## Pathway

- [RNA degradation](#)

## Disease

- [Amyotrophic lateral sclerosis](#)
- [Genetic Predisposition to Disease](#)