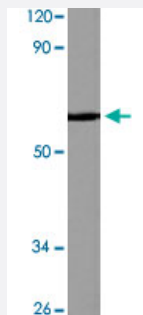


# FXR2 polyclonal antibody

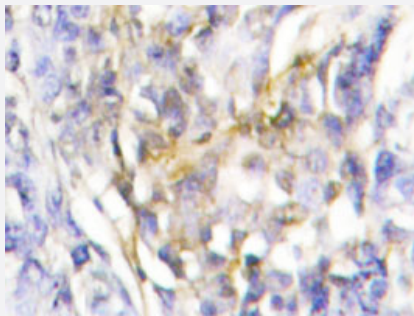
Catalog # PAB26860      Size 100 uL

## Applications



### Western Blot (Cell lysate)

Western blot analysis of Raw 264.7 cell lysate with FXR2 polyclonal antibody (Cat # PAB26860) at 1:500 dilution.



### Immunohistochemistry (Formalin/PFA-fixed paraffin-embedded sections)

Immunohistochemical analysis of paraffin-embedded human muscle tissue using FXR2 polyclonal antibody (Cat # PAB26860).

## Specification

<b>Product Description</b>	Rabbit polyclonal antibody raised against synthetic peptide of FXR2.
<b>Immunogen</b>	A synthetic peptide corresponding to human FXR2.
<b>Host</b>	Rabbit
<b>Theoretical MW (kDa)</b>	~65.0
<b>Reactivity</b>	Human, Mouse
<b>Specificity</b>	FXR2 polyclonal antibody detects endogenous levels of FXR2 protein.
<b>Form</b>	Liquid

<b>Purification</b>	Affinity purification
<b>Recommend Usage</b>	Western Blot (1:500-1:1000) Immunohistochemistry (1:50-1:200) Immunofluorescence (1:50-1:200) The optimal working dilution should be determined by the end user.
<b>Storage Buffer</b>	In PBS, pH 7.2 (0.09% sodium azide)
<b>Storage Instruction</b>	Store at 4°C. For long term storage store at -20°C. Aliquot to avoid repeated freezing and thawing.
<b>Note</b>	This product contains sodium azide: a POISONOUS AND HAZARDOUS SUBSTANCE which should be handled by trained staff only.

## Applications

- Western Blot (Cell lysate)

Western blot analysis of Raw 264.7 cell lysate with FXR2 polyclonal antibody (Cat # PAB26860) at 1:500 dilution.

- Immunohistochemistry (Formalin/PFA-fixed paraffin-embedded sections)

Immunohistochemical analysis of paraffin-embedded human muscle tissue using FXR2 polyclonal antibody (Cat # PAB26860).

- Immunofluorescence

## Gene Info — FXR2

<b>Entrez GeneID</b>	<a href="#">9513</a>
<b>Protein Accession#</b>	<a href="#">P51116</a>
<b>Gene Name</b>	FXR2
<b>Gene Alias</b>	FMR1L2
<b>Gene Description</b>	fragile X mental retardation, autosomal homolog 2
<b>Omim ID</b>	<a href="#">605339</a>
<b>Gene Ontology</b>	<a href="#">Hyperlink</a>

**Gene Summary**

The protein encoded by this gene is a RNA binding protein containing two KH domains and one RCG box, which is similar to FMRP and FXR1. It associates with polyribosomes, predominantly with 60S large ribosomal subunits. This encoded protein may self-associate or interact with FMRP and FXR1. It may have a role in the development of fragile X mental retardation syndrome. [provided by RefSeq]

**Other Designations**

fragile X mental retardation syndrome related protein 2|fragile X-mental retardation 1-like 2