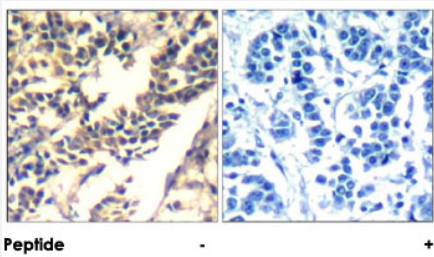


# CBL polyclonal antibody

Catalog # PAB26857      Size 100 ug

## Applications



### Immunohistochemistry (Formalin/PFA-fixed paraffin-embedded sections)

Immunohistochemical analysis of paraffin-embedded human breast carcinoma tissue using CBL polyclonal antibody (Cat # PAB26857).

## Specification

Product Description	Rabbit polyclonal antibody raised against synthetic peptide of CBL.
Immunogen	A synthetic peptide (conjugated with KLH) corresponding to residues surrounding Y700 of human CBL.
Sequence	T-E-Yp-M-T
Host	Rabbit
Theoretical MW (kDa)	120
Reactivity	Human
Form	Liquid
Purification	Affinity chromatography
Concentration	1 mg/mL
Recommend Usage	Immunohistochemistry (1:50-1:100) The optimal working dilution should be determined by the end user.
Storage Buffer	In PBS, 150 mM NaCl, pH 7.4 (50% glycerol, 0.02% sodium azide)

**Storage Instruction**

Store at -20°C.  
Aliquot to avoid repeated freezing and thawing.

**Note**

This product contains sodium azide: a POISONOUS AND HAZARDOUS SUBSTANCE which should be handled by trained staff only.

## Applications

- Immunohistochemistry (Formalin/PFA-fixed paraffin-embedded sections)

Immunohistochemical analysis of paraffin-embedded human breast carcinoma tissue using CBL polyclonal antibody (Cat # PAB26857).

## Gene Info — CBL

**Entrez GeneID**[867](#)**Protein Accession#**[P22681](#)**Gene Name**

CBL

**Gene Alias**

C-CBL, CBL2, RNF55

**Gene Description**

Cas-Br-M (murine) ecotropic retroviral transforming sequence

**Omim ID**[165360](#)**Gene Ontology**[Hyperlink](#)**Gene Summary**

The cbl oncogene was first identified as part of a transforming retrovirus which induces mouse pre-B and pro-B cell lymphomas. As an adaptor protein for receptor protein-tyrosine kinases, it positively regulates receptor protein-tyrosine kinase ubiquitination in a manner dependent upon its variant SH2 and RING finger domains. Ubiquitination of receptor protein-tyrosine kinases terminates signaling by marking active receptors for degradation. [provided by RefSeq]

**Other Designations**

oncogene CBL2

## Pathway

- [Chronic myeloid leukemia](#)
- [Endocytosis](#)
- [ErbB signaling pathway](#)

- [Insulin signaling pathway](#)
- [Jak-STAT signaling pathway](#)
- [Pathways in cancer](#)
- [T cell receptor signaling pathway](#)
- [Ubiquitin mediated proteolysis](#)

## Disease

- [Diabetes Mellitus](#)
- [Disease Progression](#)
- [Genetic Predisposition to Disease](#)
- [Leukemia](#)
- [Tobacco Use Disorder](#)