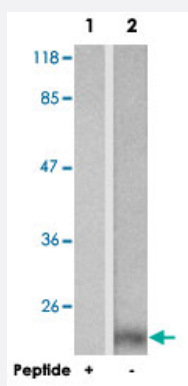


# STMN1 polyclonal antibody

Catalog # PAB26839      Size 100 ug

## Applications



### Western Blot (Cell lysate)

Western blot analysis of extracts from HeLa cell using STMN1 polyclonal antibody (Cat # PAB26839).

## Specification

Product Description	Rabbit polyclonal antibody raised against synthetic peptide of STMN1.
Immunogen	A synthetic peptide (conjugated with KLH) corresponding to residues surrounding S62 of human STMN1.
Sequence	R-K-Sp-H-E
Host	Rabbit
Theoretical MW (kDa)	19
Reactivity	Human, Mouse, Rat
Form	Liquid
Purification	Affinity chromatography
Concentration	1 mg/mL
Recommend Usage	Western Blot (1:500-1:1000) The optimal working dilution should be determined by the end user.

<b>Storage Buffer</b>	In PBS, 150 mM NaCl, pH 7.4 (50% glycerol, 0.02% sodium azide)
<b>Storage Instruction</b>	Store at -20°C. Aliquot to avoid repeated freezing and thawing.
<b>Note</b>	This product contains sodium azide: a POISONOUS AND HAZARDOUS SUBSTANCE which should be handled by trained staff only.

## Applications

- Western Blot (Cell lysate)

Western blot analysis of extracts from HeLa cell using STMN1 polyclonal antibody (Cat # PAB26839).

## Gene Info — STMN1

<b>Entrez GeneID</b>	<a href="#">3925</a>
<b>Protein Accession#</b>	<a href="#">P16949</a>
<b>Gene Name</b>	STMN1
<b>Gene Alias</b>	LAP18, Lag, OP18, PP17, PP19, PR22, SMN
<b>Gene Description</b>	stathmin 1/oncoprotein 18
<b>Omim ID</b>	<a href="#">151442</a>
<b>Gene Ontology</b>	<a href="#">Hyperlink</a>
<b>Gene Summary</b>	This gene belongs to the stathmin family of genes. It encodes a ubiquitous cytosolic phosphoprotein proposed to function as an intracellular relay integrating regulatory signals of the cellular environment. The encoded protein is involved in the regulation of the microtubule filament system by destabilizing microtubules. It prevents assembly and promotes disassembly of microtubules. Multiple transcript variants encoding different isoforms have been found for this gene. [provided by RefSeq]
<b>Other Designations</b>	OTTHUMP00000008527 OTTHUMP00000008528 OTTHUMP00000008530 leukemia-associated phosphoprotein p18 metablastin oncoprotein 18 phosphoprotein 19 prosolin stathmin 1

## Pathway

- [MAPK signaling pathway](#)

## Disease

- [Anorexia Nervosa](#)
- [Bulimia](#)
- [Genetic Predisposition to Disease](#)
- [Startle Reaction](#)