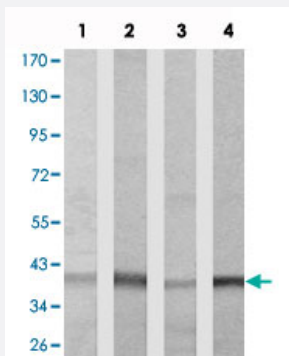


PPP2CA polyclonal antibody

Catalog # PAB26830 Size 100 ug

Applications



Western Blot (Cell lysate)

Western blot analysis of extracts from various cells using PPP2CA polyclonal antibody (Cat # PAB26830).

Lane 1: A-431. Lane 2: MCF-7. Lane 3: 293. Lane 4: A-549.

Specification

Product Description Rabbit polyclonal antibody raised against synthetic peptide of PPP2CA.

Immunogen A synthetic peptide corresponding to human PPP2CA.

Sequence KQLSESQVKSL

Host Rabbit

Theoretical MW (kDa) 40

Reactivity Human, Mouse, Rat

Form Liquid

Purification Affinity chromatography

Concentration 1 mg/mL

Recommend Usage Western Blot (1:500-1:1000)
The optimal working dilution should be determined by the end user.

Storage Buffer In PBS, 150 mM NaCl, pH 7.4 (50% glycerol, 0.02% sodium azide)

Storage Instruction

Store at -20°C.
Aliquot to avoid repeated freezing and thawing.

Note

This product contains sodium azide: a POISONOUS AND HAZARDOUS SUBSTANCE which should be handled by trained staff only.

Applications

- Western Blot (Cell lysate)

Western blot analysis of extracts from various cells using PPP2CA polyclonal antibody (Cat # PAB26830).

Lane 1: A-431. Lane 2: MCF-7. Lane 3: 293. Lane 4: A-549.

Gene Info — PPP2CA

Entrez GeneID[5515](#)**Protein Accession#**[P67775](#)**Gene Name**

PPP2CA

Gene Alias

PP2Ac, PP2CA, RP-C

Gene Description

protein phosphatase 2 (formerly 2A), catalytic subunit, alpha isoform

Omim ID[176915](#)**Gene Ontology**[Hyperlink](#)**Gene Summary**

This gene encodes the phosphatase 2A catalytic subunit. Protein phosphatase 2A is one of the four major Ser/Thr phosphatases, and it is implicated in the negative control of cell growth and division. It consists of a common heteromeric core enzyme, which is composed of a catalytic subunit and a constant regulatory subunit, that associates with a variety of regulatory subunits. This gene encodes an alpha isoform of the catalytic subunit. [provided by RefSeq]

Other Designations

PP2A-alpha|protein phosphatase 2, catalytic subunit, alpha isoform|replication protein C|serine/threonine protein phosphatase 2A, catalytic subunit, alpha isoform|serine/threonine-protein phosphatase 2A catalytic subunit alpha isoform

Pathway

- [Long-term depression](#)
- [TGF-beta signaling pathway](#)

- [Tight junction](#)
- [Wnt signaling pathway](#)

Disease

- [Genetic Predisposition to Disease](#)
- [Narcolepsy](#)