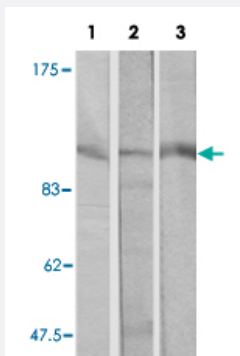


Trpc6 polyclonal antibody

Catalog # PAB26829 Size 100 ug

Applications



Western Blot

Western blot analysis using Trpc6 polyclonal antibody (Cat # PAB26829). Lane 1: human A-549 cells. Lane 2: mouse brain. Lane 3: rat brain.

Specification

Product Description	Rabbit polyclonal antibody raised against synthetic peptide of Trpc6.
Immunogen	A synthetic peptide (conjugated with KLH) corresponding to mouse Trpc6.
Sequence	RRNESQDYLLMDELG
Host	Rabbit
Theoretical MW (kDa)	100
Reactivity	Human, Mouse, Rat
Form	Liquid
Purification	Affinity chromatography
Concentration	1 mg/mL
Recommend Usage	Western Blot (1:500-1:1000) The optimal working dilution should be determined by the end user.
Storage Buffer	In PBS, 150 mM NaCl, pH 7.4 (50% glycerol, 0.02% sodium azide)

Storage Instruction

Store at -20°C.
Aliquot to avoid repeated freezing and thawing.

Note

This product contains sodium azide: a POISONOUS AND HAZARDOUS SUBSTANCE which should be handled by trained staff only.

Applications

- Western Blot

Western blot analysis using Trpc6 polyclonal antibody (Cat # PAB26829). Lane 1: human A-549 cells. Lane 2: mouse brain. Lane 3 rat brain.

Gene Info — Trpc6

Entrez GeneID[22068](#)**Protein Accession#**[Q61143](#)**Gene Name**

Trpc6

Gene Alias

AV025995, LLHWJM002, LLHWJM003, LLHWJM004, Trrp6, mtrp6

Gene Description

transient receptor potential cation channel, subfamily C, member 6

Gene Ontology[Hyperlink](#)**Gene Summary**

subfamily C

Other Designations

transient receptor protein 6