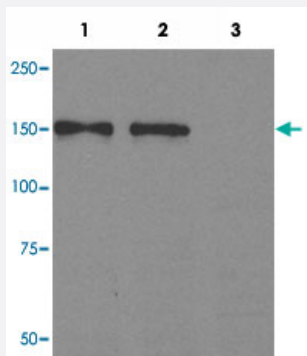


FAM129A polyclonal antibody

Catalog # PAB26827 Size 100 ug

Applications



Western Blot (Cell lysate)

Western blot analysis of extracts from A-431 (human lane 1), DU145 cancer (lane 2) and 3Y1 (rat lane 3) cells using FAM129A polyclonal antibody (Cat # PAB26827).

Specification

Product Description Rabbit polyclonal antibody raised against synthetic peptide of FAM129A.

Immunogen A synthetic peptide corresponding to human FAM129A.

Sequence KDDVKEGEGGQES

Host Rabbit

Theoretical MW (kDa) 150

Reactivity Human

Form Liquid

Purification Affinity chromatography

Concentration 1 mg/mL

Recommend Usage Western Blot (1:500-1:1000)
The optimal working dilution should be determined by the end user.

Storage Buffer In PBS, 150 mM NaCl, pH 7.4 (50% glycerol, 0.02% sodium azide)

Storage Instruction

Store at -20°C.
Aliquot to avoid repeated freezing and thawing.

Note

This product contains sodium azide: a POISONOUS AND HAZARDOUS SUBSTANCE which should be handled by trained staff only.

Applications

- Western Blot (Cell lysate)

Western blot analysis of extracts from A-431 (human lane 1), DU145 cancer (lane 2) and 3Y1 (rat lane 3) cells using FAM129A polyclonal antibody (Cat # PAB26827).

Gene Info — FAM129A

Entrez GeneID [116496](#)

Protein Accession# [Q9BZQ8](#)

Gene Name FAM129A

Gene Alias C1orf24, FLJ38228, GIG39, NIBAN

Gene Description family with sequence similarity 129, member A

Gene Ontology [Hyperlink](#)

Gene Summary O

Other Designations OTTHUMP00000033399|OTTHUMP00000060675|cell growth inhibiting protein 39|niban protein

Disease

- [Celiac Disease](#)
- [Genetic Predisposition to Disease](#)