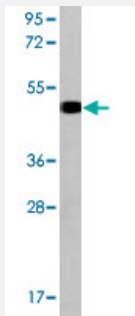


GUCY1A2 polyclonal antibody

Catalog # PAB2682

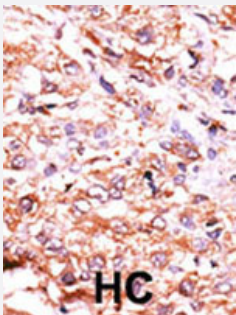
Size 400 uL

Applications



Western Blot (Tissue lysate)

Western blot analysis of mouse cerebellum tissue lysate (35 ug/lane) with GUCY1A2 polyclonal antibody (Cat # PAB2682).



Immunohistochemistry (Formalin/PFA-fixed paraffin-embedded sections)

Formalin-fixed and paraffin-embedded human hepatocellular carcinoma tissue reacted with GUCY1A2 polyclonal antibody (Cat # PAB2682), which was peroxidase-conjugated to the secondary antibody, followed by AEC staining. This data demonstrates the use of this antibody for immunohistochemistry; clinical relevance has not been evaluated. HC = hepatocarcinoma.

Specification

Product Description	Rabbit polyclonal antibody raised against synthetic peptide of GUCY1A2.
Immunogen	A synthetic peptide (conjugated with KLH) corresponding to N-terminus of human GUCY1A2.
Host	Rabbit
Reactivity	Human, Mouse
Form	Liquid
Purification	Ammonium sulfate precipitation

Recommend Usage	Western Blot (1:1000) Immunohistochemistry (1:50-100) The optimal working dilution should be determined by the end user.
Storage Buffer	In PBS (0.09% sodium azide)
Storage Instruction	Store at 4°C. For long term storage store at -20°C. Aliquot to avoid repeated freezing and thawing.
Note	This product contains sodium azide: a POISONOUS AND HAZARDOUS SUBSTANCE which should be handled by trained staff only.

Applications

- Western Blot (Tissue lysate)

Western blot analysis of mouse cerebellum tissue lysate (35 ug/lane) with GUCY1A2 polyclonal antibody (Cat # PAB2682).

- Immunohistochemistry (Formalin/PFA-fixed paraffin-embedded sections)

Formalin-fixed and paraffin-embedded human hepatocellular carcinoma tissue reacted with GUCY1A2 polyclonal antibody (Cat # PAB2682), which was peroxidase-conjugated to the secondary antibody, followed by AEC staining. This data demonstrates the use of this antibody for immunohistochemistry; clinical relevance has not been evaluated. HC = hepatocarcinoma.

Gene Info — GUCY1A2

Entrez GeneID	2977
Protein Accession#	NP_000846:P33402
Gene Name	GUCY1A2
Gene Alias	GC-SA2, GUC1A2
Gene Description	guanylate cyclase 1, soluble, alpha 2
Omim ID	601244
Gene Ontology	Hyperlink
Gene Summary	Soluble guanylyl (or guanylate) cyclases are heterodimeric enzymes consisting of an alpha subunit, such as alpha-2 (GUCY1A2), and a beta subunit, typically beta-1 (GUCY1B3; MIM 139397), which are activated by nitric oxide (NO) and which catalyze conversion of GTP to 3-prime, 5-prime-cyclic GMP and pyrophosphate (Harteneck et al., 1991 [PubMed 1683630]).[supplied by OMIM]
Other Designations	-

Publication Reference

- [Expression of nNOS and soluble guanylate cyclase in schizophrenic brain.](#)

Baba H, Suzuki T, Arai H, Emson PC.

Neuroreport 2004 Mar; 15(4):677.

- [On the activation of soluble guanylyl cyclase by nitric oxide.](#)

Bellamy TC, Wood J, Garthwaite J.

PNAS 2002 Jan; 99(1):507.

- [Guanylyl cyclase/PSD-95 interaction: targeting of the nitric oxide-sensitive alpha2beta1 guanylyl cyclase to synaptic membranes.](#)

Russwurm M, Wittau N, Koesling D.

The Journal of Biological Chemistry 2001 Nov; 276(48):44647.

Application: WB-Ti, Rat, Rat brains, Synaptosomes

Pathway

- [Gap junction](#)
- [Long-term depression](#)
- [Purine metabolism](#)
- [Vascular smooth muscle contraction](#)

Disease

- [Celiac Disease](#)
- [Genetic Predisposition to Disease](#)
- [Tobacco Use Disorder](#)