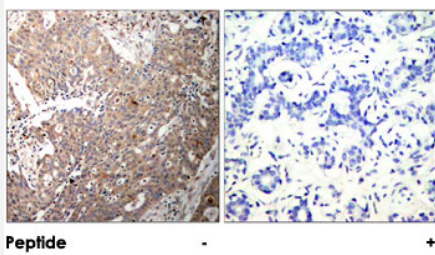


KRT18 polyclonal antibody

Catalog # PAB26815 Size 100 ug

Applications



Immunohistochemistry (Formalin/PFA-fixed paraffin-embedded sections)

Immunohistochemical analysis of paraffin-embedded human breast carcinoma tissue using KRT18 polyclonal antibody (Cat # PAB26815).

Specification

Product Description	Rabbit polyclonal antibody raised against synthetic peptide of KRT18.
Immunogen	A synthetic peptide corresponding to residues surrounding S33 of human KRT18.
Sequence	A-A-Sp-V-Y
Host	Rabbit
Theoretical MW (kDa)	46
Reactivity	Human
Form	Liquid
Purification	Affinity chromatography
Concentration	1 mg/mL
Recommend Usage	Immunohistochemistry (1:50-1:100) The optimal working dilution should be determined by the end user.
Storage Buffer	In PBS, 150 mM NaCl, pH 7.4 (50% glycerol, 0.02% sodium azide)

Storage Instruction

Store at -20°C.
Aliquot to avoid repeated freezing and thawing.

Note

This product contains sodium azide: a POISONOUS AND HAZARDOUS SUBSTANCE which should be handled by trained staff only.

Applications

- Immunohistochemistry (Formalin/PFA-fixed paraffin-embedded sections)

Immunohistochemical analysis of paraffin-embedded human breast carcinoma tissue using KRT18 polyclonal antibody (Cat # PAB26815).

Gene Info — KRT18

Entrez GeneID[3875](#)**Protein Accession#**[P05783](#)**Gene Name**

KRT18

Gene Alias

CYK18, K18

Gene Description

keratin 18

Omim ID[148070 215600](#)**Gene Ontology**[Hyperlink](#)**Gene Summary**

KRT18 encodes the type I intermediate filament chain keratin 18. Keratin 18, together with its filament partner keratin 8, are perhaps the most commonly found members of the intermediate filament gene family. They are expressed in single layer epithelial tissues of the body. Mutations in this gene have been linked to cryptogenic cirrhosis. Two transcript variants encoding the same protein have been found for this gene. [provided by RefSeq]

Other Designations

cell proliferation-inducing protein 46|cytokeratin 18

Pathway

- [Pathogenic Escherichia coli infection - EHEC](#)

Disease

- [Cleft Lip](#)
- [Cleft Palate](#)
- [Drug-Induced Liver Injury](#)
- [Genetic Predisposition to Disease](#)
- [Liver Cirrhosis](#)
- [Liver Failure](#)