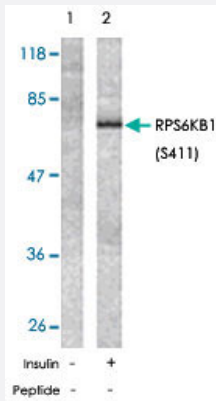


# RPS6KB1 (phospho S411) polyclonal antibody

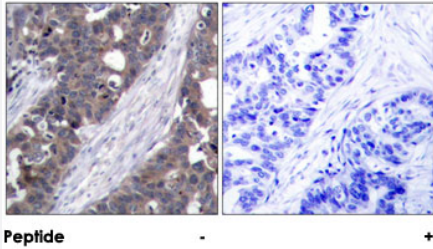
Catalog # PAB26791      Size 100 ug

## Applications



### Western Blot (Cell lysate)

Western blot analysis of extracts from 293 cells untreated or treated with insulin (10 u/mL, 15 min) using RPS6KB1 (phospho S411) polyclonal antibody (Cat # PAB26791).



### Immunohistochemistry (Formalin/PFA-fixed paraffin-embedded sections)

Immunohistochemical analysis of paraffin-embedded human breast carcinoma tissue using RPS6KB1 (phospho S411) polyclonal antibody (Cat # PAB26791).

## Specification

<b>Product Description</b>	Rabbit polyclonal antibody raised against synthetic phosphopeptide of RPS6KB1.
<b>Immunogen</b>	Synthetic phosphopeptide corresponding to residues surrounding S411 of human RPS6KB1.
<b>Sequence</b>	IR-Sp-P-R
<b>Host</b>	Rabbit
<b>Reactivity</b>	Human, Mouse, Rat
<b>Form</b>	Liquid

Purification	Affinity chromatography
Concentration	1 mg/mL
Recommend Usage	Western Blot (1:500-1:1000) Immunohistochemistry (1:50-1:100) The optimal working dilution should be determined by the end user.
Storage Buffer	In PBS, 150 mM NaCl, pH 7.4 (50% glycerol, 0.02% sodium azide)
Storage Instruction	Store at -20°C. Aliquot to avoid repeated freezing and thawing.
Note	This product contains sodium azide: a POISONOUS AND HAZARDOUS SUBSTANCE which should be handled by trained staff only.

## Applications

- Western Blot (Cell lysate)

Western blot analysis of extracts from 293 cells untreated or treated with insulin (10 u/mL, 15 min) using RPS6KB1 (phospho S411) polyclonal antibody (Cat # PAB26791).

- Immunohistochemistry (Formalin/PFA-fixed paraffin-embedded sections)

Immunohistochemical analysis of paraffin-embedded human breast carcinoma tissue using RPS6KB1 (phospho S411) polyclonal antibody (Cat # PAB26791).

## Gene Info — RPS6KB1

Entrez GeneID	<a href="#">6198</a>
Protein Accession#	<a href="#">P23443</a>
Gene Name	RPS6KB1
Gene Alias	PS6K, S6K, S6K1, STK14A, p70(S6K)-alpha, p70-S6K, p70-alpha
Gene Description	ribosomal protein S6 kinase, 70kDa, polypeptide 1
Omim ID	<a href="#">608938</a>
Gene Ontology	<a href="#">Hyperlink</a>

**Gene Summary**

This gene encodes a member of the RSK (ribosomal S6 kinase) family of serine/threonine kinases. This kinase contains 2 non-identical kinase catalytic domains and phosphorylates several residues of the S6 ribosomal protein. The kinase activity of this protein leads to an increase in protein synthesis and cell proliferation. Amplification of the region of DNA encoding this gene and overexpression of this kinase are seen in some breast cancer cell lines. Alternate translational start sites have been described and alternate transcriptional splice variants have been observed but have not been thoroughly characterized. [provided by RefSeq]

**Other Designations**

p70 S6 kinase, alpha 1|p70 S6 kinase, alpha 2|ribosomal protein S6 kinase, 70kD, polypeptide 1|serine/threonine kinase 14 alpha

**Pathway**

- [Acute myeloid leukemia](#)
- [ErbB signaling pathway](#)
- [Fc gamma R-mediated phagocytosis](#)
- [Insulin signaling pathway](#)
- [mTOR signaling pathway](#)
- [TGF-beta signaling pathway](#)

**Disease**

- [Cardiovascular Diseases](#)
- [Diabetes Mellitus](#)
- [Edema](#)
- [Head and Neck Neoplasms](#)
- [Neoplasm Recurrence](#)
- [Neoplasms](#)