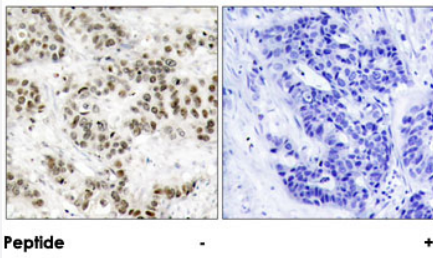


MAPK9/MAPK10 polyclonal antibody

Catalog # PAB26778

Size 100 ug

Applications



Immunohistochemistry (Formalin/PFA-fixed paraffin-embedded sections)

Immunohistochemical analysis of paraffin-embedded human breast carcinoma tissue using MAPK9/MAPK10 polyclonal antibody (Cat # PAB26778).

Specification

| | |
|----------------------------|---|
| Product Description | Rabbit polyclonal antibody raised against synthetic peptide of MAPK9/MAPK10. |
| Immunogen | A synthetic peptide corresponding to residues surrounding T185 of human MAPK9/MAPK10. |
| Sequence | T-P-Yp-V-V |
| Host | Rabbit |
| Reactivity | Human, Mouse, Rat |
| Form | Liquid |
| Purification | Affinity chromatography |
| Concentration | 1 mg/mL |
| Recommend Usage | Immunohistochemistry (1:50-1:100) The optimal working dilution should be determined by the end user. |
| Storage Buffer | In PBS, 150 mM NaCl, pH 7.4 (50% glycerol, 0.02% sodium azide) |
| Storage Instruction | Store at -20°C. Aliquot to avoid repeated freezing and thawing. |

Note

This product contains sodium azide: a POISONOUS AND HAZARDOUS SUBSTANCE which should be handled by trained staff only.

Applications

- Immunohistochemistry (Formalin/PFA-fixed paraffin-embedded sections)

Immunohistochemical analysis of paraffin-embedded human breast carcinoma tissue using MAPK9/MAPK10 polyclonal antibody (Cat # PAB26778).

Gene Info — MAPK9

Entrez GeneID [5601](#)

Protein Accession# [P45984 \(Gene ID : 5601\);P53779 \(Gene ID : 5602\)](#)

Gene Name MAPK9

Gene Alias JNK-55, JNK2, JNK2A, JNK2ALPHA, JNK2B, JNK2BETA, PRKM9, SAPK, p54a, p54aSAPK

Gene Description mitogen-activated protein kinase 9

Omim ID [602896](#)

Gene Ontology [Hyperlink](#)

Gene Summary

The protein encoded by this gene is a member of the MAP kinase family. MAP kinases act as an integration point for multiple biochemical signals, and are involved in a wide variety of cellular processes such as proliferation, differentiation, transcription regulation and development. This kinase targets specific transcription factors, and thus mediates immediate-early gene expression in response to various cell stimuli. It is most closely related to MAPK8, both of which are involved in UV radiation induced apoptosis, thought to be related to the cytochrome c-mediated cell death pathway. This gene and MAPK8 are also known as c-Jun N-terminal kinases. This kinase blocks the ubiquitination of tumor suppressor p53, and thus it increases the stability of p53 in nonstressed cells. Studies of this gene's mouse counterpart suggest a key role in T-cell differentiation. Several alternatively spliced transcript variants encoding distinct isoforms have been reported. [provided by RefSeq]

Other Designations

Jun kinase|MAP kinase 9|c-Jun N-terminal kinase 2|c-Jun kinase 2|mitogen-activated protein kinase 9 isoform JNK2 alpha2|stress-activated protein kinase JNK2

Gene Info — MAPK10

Entrez GeneID [5602](#)

| | |
|---------------------------|---|
| Protein Accession# | P45984 (Gene ID : 5601);P53779 (Gene ID : 5602) |
| Gene Name | MAPK10 |
| Gene Alias | FLJ12099, FLJ33785, JNK3, JNK3A, MGC50974, PRKM10, p493F12, p54bSAPK |
| Gene Description | mitogen-activated protein kinase 10 |
| Omim ID | 602897 606369 |
| Gene Ontology | Hyperlink |
| Gene Summary | <p>The protein encoded by this gene is a member of the MAP kinase family. MAP kinases act as an integration point for multiple biochemical signals, and are involved in a wide variety of cellular processes such as proliferation, differentiation, transcription regulation and development. This protein is a neuronal-specific form of c-Jun N-terminal kinases (JNKs). Through its phosphorylation and nuclear localization, this kinase plays regulatory roles in the signaling pathways during neuronal apoptosis. Beta-arrestin 2, a receptor-regulated MAP kinase scaffold protein, is found to interact with, and stimulate the phosphorylation of this kinase by MAP kinase kinase 4 (MKK4). Cyclin-dependent kinase 5 can phosphorylate, and inhibit the activity of this kinase, which may be important in preventing neuronal apoptosis. Four alternatively spliced transcript variants encoding distinct isoforms have been reported. [provided by RefSeq]</p> |
| Other Designations | JNK3 alpha protein kinase MAP kinase OTTHUMP00000161180 OTTHUMP00000161182 OTTHUMP00000161183 c-Jun N-terminal kinase 3 c-Jun kinase 3 stress activated protein kinase JNK3 stress activated protein kinase beta |

Pathway

- [Adipocytokine signaling pathway](#)
- [Adipocytokine signaling pathway](#)
- [Colorectal cancer](#)
- [Colorectal cancer](#)
- [Epithelial cell signaling in Helicobacter pylori infection](#)
- [Epithelial cell signaling in Helicobacter pylori infection](#)
- [ErbB signaling pathway](#)
- [ErbB signaling pathway](#)
- [Fc epsilon RI signaling pathway](#)
- [Fc epsilon RI signaling pathway](#)

- [Focal adhesion](#)
- [Focal adhesion](#)
- [GnRH signaling pathway](#)
- [GnRH signaling pathway](#)
- [Insulin signaling pathway](#)
- [Insulin signaling pathway](#)
- [MAPK signaling pathway](#)
- [MAPK signaling pathway](#)
- [Neurotrophin signaling pathway](#)
- [Neurotrophin signaling pathway](#)
- [Pancreatic cancer](#)
- [Pancreatic cancer](#)
- [Pathways in cancer](#)
- [Pathways in cancer](#)
- [T cell receptor signaling pathway](#)
- [Toll-like receptor signaling pathway](#)
- [Toll-like receptor signaling pathway](#)
- [Type II diabetes mellitus](#)
- [Type II diabetes mellitus](#)
- [Wnt signaling pathway](#)
- [Wnt signaling pathway](#)

Disease

- [Breast cancer](#)
- [Breast Neoplasms](#)
- [Genetic Predisposition to Disease](#)

- [HIV Infections](#)
- [HIV Infections](#)
- [Tobacco Use Disorder](#)