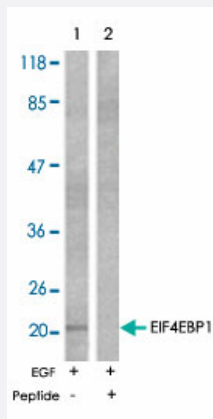


# EIF4EBP1 polyclonal antibody

Catalog # PAB26760

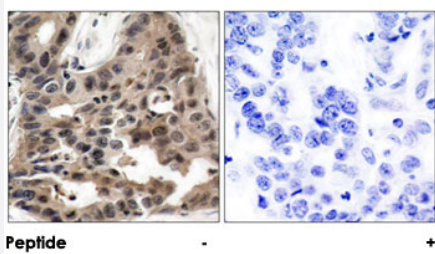
Size 100 ug

## Applications



### Western Blot (Cell lysate)

Western blot analysis of extracts from MDA-MB-435 cells untreated or EGF-treated (200 ng/mL, 30 min) using EIF4EBP1 polyclonal antibody (Cat # PAB26760).



### Immunohistochemistry (Formalin/PFA-fixed paraffin-embedded sections)

Immunohistochemical analysis of paraffin-embedded human breast carcinoma tissue using EIF4EBP1 polyclonal antibody (Cat # PAB26760).

## Specification

Product Description	Rabbit polyclonal antibody raised against synthetic peptide of EIF4EBP1.
Immunogen	A synthetic peptide corresponding to residues surrounding T36 of human EIF4EBP1.
Sequence	S-T-Tp-P-G
Host	Rabbit
Reactivity	Human, Mouse, Rat
Form	Liquid

Purification	Affinity chromatography
Concentration	1 mg/mL
Recommend Usage	Western Blot (1:500-1:1000) Immunohistochemistry (1:50-1:100) The optimal working dilution should be determined by the end user.
Storage Buffer	In PBS (without Mg <sup>2+</sup> and Ca <sup>2+</sup> ), 150 mM NaCl, pH 7.4 (50% glycerol, 0.02% sodium azide)
Storage Instruction	Store at -20°C. Aliquot to avoid repeated freezing and thawing.
Note	This product contains sodium azide: a POISONOUS AND HAZARDOUS SUBSTANCE which should be handled by trained staff only.

## Applications

- Western Blot (Cell lysate)

Western blot analysis of extracts from MDA-MB-435 cells untreated or EGF-treated (200 ng/mL, 30 min) using EIF4EBP1 polyclonal antibody (Cat # PAB26760).

- Immunohistochemistry (Formalin/PFA-fixed paraffin-embedded sections)

Immunohistochemical analysis of paraffin-embedded human breast carcinoma tissue using EIF4EBP1 polyclonal antibody (Cat # PAB26760).

## Gene Info — EIF4EBP1

Entrez GeneID	<a href="#">1978</a>
Protein Accession#	<a href="#">Q13541</a>
Gene Name	EIF4EBP1
Gene Alias	4E-BP1, 4EBP1, BP-1, MGC4316, PHAS-I
Gene Description	eukaryotic translation initiation factor 4E binding protein 1
Omim ID	<a href="#">602223</a>
Gene Ontology	<a href="#">Hyperlink</a>

**Gene Summary**

This gene encodes one member of a family of translation repressor proteins. The protein directly interacts with eukaryotic translation initiation factor 4E (eIF4E), which is a limiting component of the multisubunit complex that recruits 40S ribosomal subunits to the 5' end of mRNAs. Interaction of this protein with eIF4E inhibits complex assembly and represses translation. This protein is phosphorylated in response to various signals including UV irradiation and insulin signaling, resulting in its dissociation from eIF4E and activation of mRNA translation. [provided by RefSeq]

**Other Designations**

eIF4E-binding protein 1|phosphorylated heat- and acid-stable protein regulated by insulin 1

**Pathway**

- [Acute myeloid leukemia](#)
- [ErbB signaling pathway](#)
- [Insulin signaling pathway](#)
- [mTOR signaling pathway](#)

**Disease**

- [Alzheimer disease](#)
- [Genetic Predisposition to Disease](#)
- [Multiple System Atrophy](#)
- [Obesity](#)