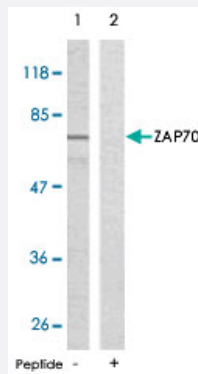


# ZAP70 polyclonal antibody

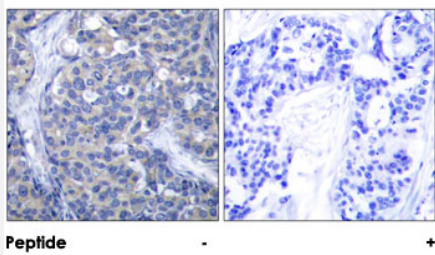
Catalog # PAB26730      Size 100 ug

## Applications



### Western Blot (Cell lysate)

Western blot analysis of extracts from Jurkat cells using ZAP70 polyclonal antibody (Cat # PAB26730).



### Immunohistochemistry (Formalin/PFA-fixed paraffin-embedded sections)

Immunohistochemical analysis of paraffin-embedded human breast carcinoma tissue using ZAP70 polyclonal antibody (Cat # PAB26730).

## Specification

Product Description	Rabbit polyclonal antibody raised against synthetic peptide of ZAP70.
Immunogen	A synthetic peptide corresponding to residues surrounding Y319 of human ZAP70.
Sequence	S-P-Yp-S-D
Host	Rabbit
Reactivity	Human, Mouse, Rat
Form	Liquid

Purification	Affinity chromatography
Concentration	1 mg/mL
Recommend Usage	Western Blot (1:500-1:1000) Immunohistochemistry (1:50-1:100) The optimal working dilution should be determined by the end user.
Storage Buffer	In PBS (without Mg <sup>2+</sup> and Ca <sup>2+</sup> ), 150 mM NaCl, pH 7.4 (50% glycerol, 0.02% sodium azide)
Storage Instruction	Store at -20°C. Aliquot to avoid repeated freezing and thawing.
Note	This product contains sodium azide: a POISONOUS AND HAZARDOUS SUBSTANCE which should be handled by trained staff only.

## Applications

- Western Blot (Cell lysate)

Western blot analysis of extracts from Jurkat cells using ZAP70 polyclonal antibody (Cat # PAB26730).

- Immunohistochemistry (Formalin/PFA-fixed paraffin-embedded sections)

Immunohistochemical analysis of paraffin-embedded human breast carcinoma tissue using ZAP70 polyclonal antibody (Cat # PAB26730).

## Gene Info — ZAP70

Entrez GeneID	<a href="#">7535</a>
Protein Accession#	<a href="#">P43403</a>
Gene Name	ZAP70
Gene Alias	FLJ17670, FLJ17679, SRK, STD, TZK, ZAP-70
Gene Description	zeta-chain (TCR) associated protein kinase 70kDa
Omim ID	<a href="#">176947</a>
Gene Ontology	<a href="#">Hyperlink</a>

**Gene Summary**

This gene encodes an enzyme belonging to the protein tyrosine kinase family, and it plays a role in T-cell development and lymphocyte activation. This enzyme, which is phosphorylated on tyrosine residues upon T-cell antigen receptor (TCR) stimulation, functions in the initial step of TCR-mediated signal transduction in combination with the Src family kinases, Lck and Fyn. This enzyme is also essential for thymocyte development. Mutations in this gene cause selective T-cell defect, a severe combined immunodeficiency disease characterized by a selective absence of CD8-positive T-cells. Two transcript variants that encode different isoforms have been found for this gene. [provided by RefSeq]

**Other Designations**

syk-related tyrosine kinase|zeta-chain (TCR) associated protein kinase (70 kD)|zeta-chain associated protein kinase 70kDa|zeta-chain associated protein kinase, 70kD

**Pathway**

- [Natural killer cell mediated cytotoxicity](#)
- [Primary immunodeficiency](#)
- [T cell receptor signaling pathway](#)

**Disease**

- [HIV Infections](#)