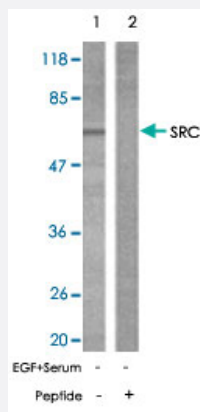


SRC polyclonal antibody

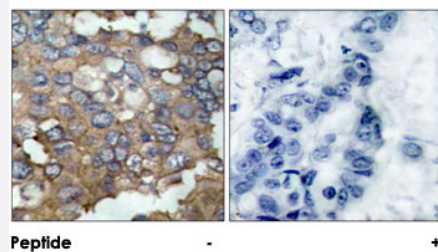
Catalog # PAB26727 Size 100 ug

Applications



Western Blot (Cell lysate)

Western blot analysis of extracts from 293 cells using SRC polyclonal antibody (Cat # PAB26727).



Immunohistochemistry (Formalin/PFA-fixed paraffin-embedded sections)

Immunohistochemical analysis of paraffin-embedded human breast carcinoma tissue using SRC polyclonal antibody (Cat # PAB26727).

Specification

Product Description	Rabbit polyclonal antibody raised against synthetic peptide of SRC.
Immunogen	A synthetic peptide corresponding to residues surrounding Y529 of human SRC.
Sequence	P-Q-Yp-Q-P
Host	Rabbit
Reactivity	Human, Mouse, Rat
Form	Liquid

Purification	Affinity chromatography
Concentration	1 mg/mL
Recommend Usage	Western Blot (1:500-1:1000) Immunohistochemistry (1:50-1:100) The optimal working dilution should be determined by the end user.
Storage Buffer	In PBS (without Mg ²⁺ and Ca ²⁺), 150 mM NaCl, pH 7.4 (50% glycerol, 0.02% sodium azide)
Storage Instruction	Store at -20°C. Aliquot to avoid repeated freezing and thawing.
Note	This product contains sodium azide: a POISONOUS AND HAZARDOUS SUBSTANCE which should be handled by trained staff only.

Applications

- Western Blot (Cell lysate)

Western blot analysis of extracts from 293 cells using SRC polyclonal antibody (Cat # PAB26727).

- Immunohistochemistry (Formalin/PFA-fixed paraffin-embedded sections)

Immunohistochemical analysis of paraffin-embedded human breast carcinoma tissue using SRC polyclonal antibody (Cat # PAB26727).

Gene Info — SRC

Entrez GeneID	6714
Protein Accession#	P12931
Gene Name	SRC
Gene Alias	ASV, SRC1, c-SRC, p60-Src
Gene Description	v-src sarcoma (Schmidt-Ruppin A-2) viral oncogene homolog (avian)
Omim ID	190090
Gene Ontology	Hyperlink

Gene Summary

This gene is highly similar to the v-src gene of Rous sarcoma virus. This proto-oncogene may play a role in the regulation of embryonic development and cell growth. The protein encoded by this gene is a tyrosine-protein kinase whose activity can be inhibited by phosphorylation by c-SRC kinase. Mutations in this gene could be involved in the malignant progression of colon cancer. Two transcript variants encoding the same protein have been found for this gene. [provided by RefSeq]

Other Designations

OTTHUMP00000174476|OTTHUMP00000174477|proto-oncogene tyrosine-protein kinase SRC|protooncogene SRC, Rous sarcoma|tyrosine kinase pp60c-src|tyrosine-protein kinase SRC-1

Pathway

- [Adherens junction](#)
- [Endocytosis](#)
- [Epithelial cell signaling in Helicobacter pylori infection](#)
- [ErbB signaling pathway](#)
- [Focal adhesion](#)
- [Gap junction](#)
- [GnRH signaling pathway](#)
- [Tight junction](#)
- [VEGF signaling pathway](#)

Disease

- [Genetic Predisposition to Disease](#)
- [HIV Infections](#)
- [Thyroid Neoplasms](#)