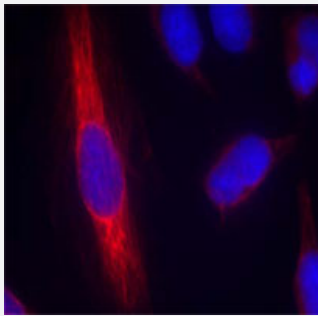


Nos1 polyclonal antibody

Catalog # PAB26722 Size 100 ug

Applications



Immunofluorescence

Immunofluorescence staining of methanol-fixed HeLa cells using Nos1 polyclonal antibody (Cat # PAB26722 red).

Specification

Product Description	Rabbit polyclonal antibody raised against synthetic peptide of Nos1.
Immunogen	A synthetic peptide (conjugated with KLH) corresponding to residues surrounding S852 of mouse Nos1.
Sequence	F-N-Sp-V-S
Host	Rabbit
Theoretical MW (kDa)	160
Reactivity	Human, Mouse, Rat
Form	Liquid
Purification	Affinity chromatography
Concentration	1 mg/mL
Recommend Usage	Immunofluorescence (1:100-1:200) The optimal working dilution should be determined by the end user.
Storage Buffer	In PBS (without Mg^{2+} and Ca^{2+}), 150 mM NaCl, pH 7.4 (50% glycerol, 0.02% sodium azide)

Storage Instruction

Store at -20°C.
Aliquot to avoid repeated freezing and thawing.

Note

This product contains sodium azide: a POISONOUS AND HAZARDOUS SUBSTANCE which should be handled by trained staff only.

Applications

- Immunofluorescence

Immunofluorescence staining of methanol-fixed HeLa cells using Nos1 polyclonal antibody (Cat # PAB26722 red).

Gene Info — Nos1

Entrez GeneID[18125](#)**Protein Accession#**[Q9Z0J4](#)**Gene Name**

Nos1

Gene Alias

2310005C01Rik, NO, NOS-I, Nos-1, bNOS, nNOS

Gene Description

nitric oxide synthase 1, neuronal

Gene Ontology[Hyperlink](#)**Gene Summary**

O

Other Designations

OTTMUSP00000017465|neuronal nitric oxide synthase