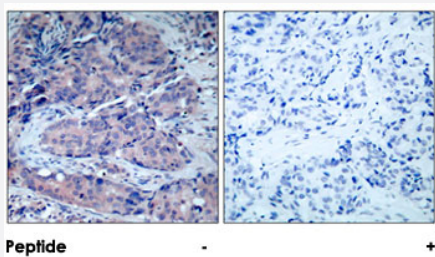


# MAP2K4 polyclonal antibody

Catalog # PAB26702      Size 100 ug

## Applications



### Immunohistochemistry (Formalin/PFA-fixed paraffin-embedded sections)

Immunohistochemical analysis of paraffin-embedded human breast carcinoma tissue using MAP2K4 polyclonal antibody (Cat # PAB26702).

## Specification

Product Description	Rabbit polyclonal antibody raised against synthetic peptide of MAP2K4.
Immunogen	A synthetic peptide corresponding to residues surrounding T261 of human MAP2K4.
Sequence	A-K-Tp-R-D
Host	Rabbit
Reactivity	Human, Mouse, Rat
Form	Liquid
Purification	Affinity chromatography
Concentration	1 mg/mL
Recommend Usage	Immunohistochemistry (1:50-1:100) The optimal working dilution should be determined by the end user.
Storage Buffer	In PBS (without $Mg^{2+}$ and $Ca^{2+}$ ), 150 mM NaCl, pH 7.4 (50% glycerol, 0.02% sodium azide)
Storage Instruction	Store at $-20^{\circ}C$ . Aliquot to avoid repeated freezing and thawing.

**Note**

This product contains sodium azide: a POISONOUS AND HAZARDOUS SUBSTANCE which should be handled by trained staff only.

## Applications

- Immunohistochemistry (Formalin/PFA-fixed paraffin-embedded sections)

Immunohistochemical analysis of paraffin-embedded human breast carcinoma tissue using MAP2K4 polyclonal antibody (Cat # PAB26702).

## Gene Info — MAP2K4

Entrez GeneID [6416](#)

Protein Accession# [P45985](#)

Gene Name MAP2K4

Gene Alias JNKK, JNKK1, MAPKK4, MEK4, MKK4, PRKMK4, SEK1, SERK1

Gene Description mitogen-activated protein kinase kinase 4

Omim ID [601335](#)

Gene Ontology [Hyperlink](#)

**Gene Summary** This gene encodes a dual specificity protein kinase that belongs to the Ser/Thr protein kinase family. This kinase is a direct activator of MAP kinases in response to various environmental stresses or mitogenic stimuli. It has been shown to activate MAPK8/JNK1, MAPK9/JNK2, and MAPK14/p38, but not MAPK1/ERK2 or MAPK3/ERK3. This kinase is phosphorylated, and thus activated by MAP3K1/MEKK. The knockout studies in mice suggested the roles of this kinase in mediating survival signal in T cell development, as well as in the organogenesis of liver. [provided by RefSeq]

**Other Designations** JNK activating kinase 1|JNK-activated kinase 1|MAP kinase kinase 4|MAPK/ERK kinase 4|SAPK/ERK kinase 1|c-Jun N-terminal kinase kinase 1|dual specificity mitogen-activated protein kinase 4

## Pathway

- [Epithelial cell signaling in Helicobacter pylori infection](#)
- [ErbB signaling pathway](#)
- [Fc epsilon RI signaling pathway](#)

- [GnRH signaling pathway](#)
- [MAPK signaling pathway](#)
- [Toll-like receptor signaling pathway](#)

## Disease

- [Colorectal Neoplasms](#)
- [Genetic Predisposition to Disease](#)
- [Lung Neoplasms](#)
- [Pancreatic cancer](#)
- [Pancreatic Neoplasms](#)