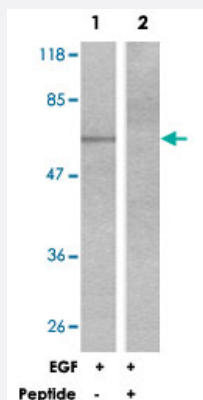


EZR polyclonal antibody

Catalog # PAB26675 Size 100 ug

Applications



Western Blot (Cell lysate)

Western blot analysis of extracts from A-431 cells untreated or EGF-treated (200 ng/mL, 5 min) using EZR polyclonal antibody (Cat # PAB26675).

Specification

Product Description	Rabbit polyclonal antibody raised against synthetic peptide of EZR.
Immunogen	A synthetic peptide corresponding to residues surrounding Y353 of human EZR.
Sequence	Q-D-Yp-E-E
Host	Rabbit
Reactivity	Human, Mouse
Form	Liquid
Purification	Affinity chromatography
Concentration	1 mg/mL
Recommend Usage	Western Blot (1:500-1:1000) The optimal working dilution should be determined by the end user.
Storage Buffer	In PBS (without Mg^{2+} and Ca^{2+}), 150 mM NaCl, pH 7.4 (50% glycerol, 0.02% sodium azide)

Storage Instruction

Store at -20°C.
Aliquot to avoid repeated freezing and thawing.

Note

This product contains sodium azide: a POISONOUS AND HAZARDOUS SUBSTANCE which should be handled by trained staff only.

Applications

- Western Blot (Cell lysate)

Western blot analysis of extracts from A-431 cells untreated or EGF-treated (200 ng/mL, 5 min) using EZR polyclonal antibody (Cat # PAB26675).

Gene Info — EZR

Entrez GeneID [7430](#)

Protein Accession# [P15311](#)

Gene Name EZR

Gene Alias CVIL, CVL, DKFZp762H157, FLJ26216, MGC1584, VIL2

Gene Description ezrin

Omim ID [123900](#)

Gene Ontology [Hyperlink](#)

Gene Summary The cytoplasmic peripheral membrane protein encoded by this gene functions as a protein-tyrosine kinase substrate in microvilli. As a member of the ERM protein family, this protein serves as an intermediate between the plasma membrane and the actin cytoskeleton. This protein plays a key role in cell surface structure adhesion, migration and organization, and it has been implicated in various human cancers. A pseudogene located on chromosome 3 has been identified for this gene. Alternatively spliced variants have also been described for this gene. [provided by RefSeq]

Other Designations OTTHUMP00000017506|OTTHUMP00000017507|cytovillin 2|villin 2 (ezrin)

Pathway

- [Leukocyte transendothelial migration](#)
- [Pathogenic Escherichia coli infection - EHEC](#)
- [Regulation of actin cytoskeleton](#)

Disease

- [Asthma](#)
- [Cardiovascular Diseases](#)
- [Diabetes Mellitus](#)
- [Edema](#)
- [Genetic Predisposition to Disease](#)
- [Hypersensitivity](#)
- [Lung Neoplasms](#)
- [Ovarian Neoplasms](#)
- [Pulmonary Disease](#)
- [Tobacco Use Disorder](#)
- [Urinary Bladder Neoplasms](#)
- [Werner syndrome](#)