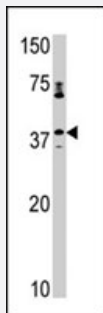


# CCRK polyclonal antibody

Catalog # PAB2665

Size 400 uL

## Applications



### Western Blot (Tissue lysate)

Western blot analysis of CCRK polyclonal antibody (Cat # PAB2665) in mouse kidney tissue lysate (35 ug/lane). CCRK (arrow) was detected using the purified polyclonal antibody.

## Specification

<b>Product Description</b>	Rabbit polyclonal antibody raised against synthetic peptide of CCRK.
<b>Immunogen</b>	A synthetic peptide (conjugated with KLH) corresponding to N-terminus of human CCRK.
<b>Host</b>	Rabbit
<b>Reactivity</b>	Human
<b>Form</b>	Liquid
<b>Purification</b>	Ammonium sulfate precipitation
<b>Recommend Usage</b>	Western Blot (1:1000) The optimal working dilution should be determined by the end user.
<b>Storage Buffer</b>	In PBS (0.09% sodium azide)
<b>Storage Instruction</b>	Store at 4°C. For long term storage store at -20°C. Aliquot to avoid repeated freezing and thawing.
<b>Note</b>	This product contains sodium azide: a POISONOUS AND HAZARDOUS SUBSTANCE which should be handled by trained staff only.

## Applications

- Western Blot (Tissue lysate)

Western blot analysis of CCRK polyclonal antibody (Cat # PAB2665) in mouse kidney tissue lysate (35 ug/lane). CCRK (arrow) was detected using the purified polyclonal antibody.

## Gene Info — CCRK

Entrez GeneID	<a href="#">23552</a>
Protein Accession#	<a href="#">NP_848519:Q8IZL9</a>
Gene Name	CCRK
Gene Alias	CDCH, p42
Gene Description	cell cycle related kinase
Omim ID	<a href="#">610076</a>
Gene Ontology	<a href="#">Hyperlink</a>
Gene Summary	The protein encoded by this gene contains a kinase domain most closely related to the cyclin-dependent protein kinases. The encoded kinase activates CDK2 and is involved in cell growth. Alternatively spliced transcript variants encoding distinct isoforms have been reported. [provided by RefSeq]
Other Designations	CAK-kinase p42 CDK-activating kinase p42 OTTHUMP00000021607 OTTHUMP00000123392 OTTHUMP00000123393 cyclin-dependent protein kinase H cyclin-kinase-activating kinase p42

## Publication Reference

- [Chemokine CCL20 enhances the growth of HuH7 cells via phosphorylation of p44/42 MAPK in vitro.](#)

Fujii H, Itoh Y, Yamaguchi K, Yamauchi N, Harano Y, Nakajima T, Minami M, Okanoue T.  
Biochemical and Biophysical Research Communications 2004 Sep; 322(3):1052.

- [p42, a novel cyclin-dependent kinase-activating kinase in mammalian cells.](#)

Liu Y, Wu C, Galaktionov K.  
The Journal of Biological Chemistry 2003 Nov; 279(6):4507.