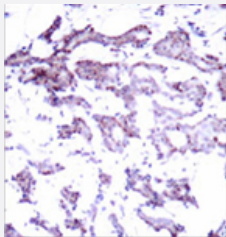


ELK1 polyclonal antibody

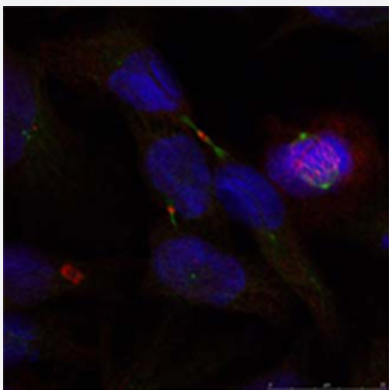
Catalog # PAB26625 Size 100 ug

Applications



Immunohistochemistry (Formalin/PFA-fixed paraffin-embedded sections)

Immunohistochemical analysis of paraffin-embedded human breast carcinoma tissue using ELK1 polyclonal antibody (Cat # PAB26625).



Immunofluorescence

Immunofluorescence staining of methanol-fixed HeLa cells using ELK1 polyclonal antibody (Cat # PAB26625 red).

Specification

Product Description	Rabbit polyclonal antibody raised against synthetic peptide of ELK1.
Immunogen	A synthetic peptide corresponding to residues surrounding S389 of human ELK1.
Sequence	P-R-Sp-P-A
Host	Rabbit
Reactivity	Human, Mouse, Rat
Form	Liquid

Purification	Affinity chromatography
Concentration	1 mg/mL
Recommend Usage	Immunohistochemistry (1:50-1:100) Immunofluorescence (1:100-1:200) The optimal working dilution should be determined by the end user.
Storage Buffer	In PBS (without Mg^{2+} and Ca^{2+}), 150 mM NaCl, pH 7.4 (50% glycerol, 0.02% sodium azide)
Storage Instruction	Store at -20°C. Aliquot to avoid repeated freezing and thawing.
Note	This product contains sodium azide: a POISONOUS AND HAZARDOUS SUBSTANCE which should be handled by trained staff only.

Applications

- Immunohistochemistry (Formalin/PFA-fixed paraffin-embedded sections)

Immunohistochemical analysis of paraffin-embedded human breast carcinoma tissue using ELK1 polyclonal antibody (Cat # PAB26625).

- Immunofluorescence

Immunofluorescence staining of methanol-fixed HeLa cells using ELK1 polyclonal antibody (Cat # PAB26625 red).

Gene Info — ELK1

Entrez GeneID	2002
Protein Accession#	P19419
Gene Name	ELK1
Gene Alias	-
Gene Description	ELK1, member of ETS oncogene family
Omim ID	311040
Gene Ontology	Hyperlink

Gene Summary

This gene is a member of the Ets family of transcription factors and of the ternary complex factor (TCF) subfamily. Proteins of the TCF subfamily form a ternary complex by binding to the the serum response factor and the serum reponse element in the promoter of the c-fos proto-oncogene. The protein encoded by this gene is a nuclear target for the ras-raf-MAPK signaling cascade. Alternately spliced transcript variants encoding the same protein have been found for this gene. [provided by RefSeq]

Other Designations

ELK1 protein|OTTHUMP00000023224|OTTHUMP00000023225

Pathway

- [Endometrial cancer](#)
- [ErbB signaling pathway](#)
- [Focal adhesion](#)
- [GnRH signaling pathway](#)
- [Insulin signaling pathway](#)
- [MAPK signaling pathway](#)
- [Prion diseases](#)

Disease

- [Cardiovascular Diseases](#)
- [Diabetes Mellitus](#)
- [Edema](#)