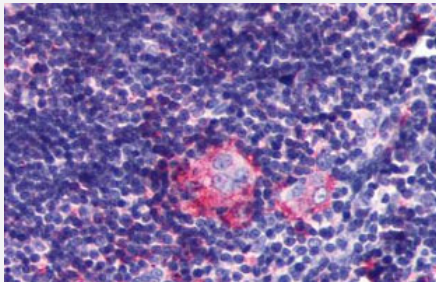


P2RY5 polyclonal antibody

Catalog # PAB26611

Size 50 ug

Applications



Immunohistochemistry (Formalin/PFA-fixed paraffin-embedded sections)

Immunohistochemical (Formalin/PFA-fixed paraffin-embedded sections) staining in human thymus with P2RY5 polyclonal antibody (Cat # PAB26611). Immunohistochemistry of formalin-fixed, paraffin-embedded tissue after heat-induced antigen retrieval.

Specification

| | |
|----------------------------|--|
| Product Description | Rabbit polyclonal antibody raised against synthetic peptide of P2RY5. |
| Immunogen | A synthetic peptide corresponding to 16 amino acids from 2nd extracellular domain of human P2RY5. |
| Host | Rabbit |
| Reactivity | Human |
| Specificity | BLAST analysis of the peptide immunogen showed no homology with other human proteins. |
| Form | Liquid |
| Purification | Immunoaffinity chromatography |
| Recommend Usage | Immunohistochemistry (Formalin/PFA-fixed paraffin-embedded sections) (3 ug/mL) The optimal working dilution should be determined by the end user. |
| Storage Buffer | In PBS (0.09% sodium azide) |
| Storage Instruction | Store at 4°C. For long term storage store at -80°C. Aliquot to avoid repeated freezing and thawing. |

Note

This product contains sodium azide: a POISONOUS AND HAZARDOUS SUBSTANCE which should be handled by trained staff only.

Applications

- Immunohistochemistry (Formalin/PFA-fixed paraffin-embedded sections)

Immunohistochemical (Formalin/PFA-fixed paraffin-embedded sections) staining in human thymus with P2RY5 polyclonal antibody (Cat # PAB26611). Immunohistochemistry of formalin-fixed, paraffin-embedded tissue after heat-induced antigen retrieval.

Gene Info — P2RY5

Entrez GeneID [10161](#)

Protein Accession# [P43657](#)

Gene Name P2RY5

Gene Alias LAH3, MGC120358, P2Y5

Gene Description purinergic receptor P2Y, G-protein coupled, 5

Omim ID [609239](#)

Gene Ontology [Hyperlink](#)

Gene Summary The protein encoded by this gene belongs to the family of G-protein coupled receptors, that are preferentially activated by adenosine and uridine nucleotides. This gene aligns with an internal intron of the retinoblastoma susceptibility gene in the reverse orientation. Alternative splicing results in multiple transcript variants. [provided by RefSeq]

Other Designations G-protein coupled purinergic receptor P2Y5|OTTHUMP00000018396|P2Y purinoceptor 5|RB intron encoded G-protein coupled receptor|purinergic receptor 5

Pathway

- [Neuroactive ligand-receptor interaction](#)