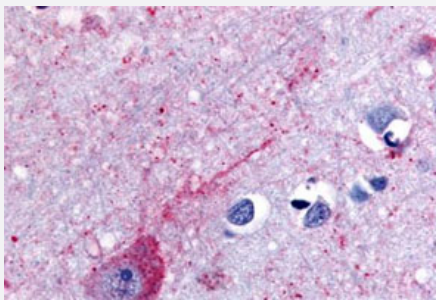


# P2RY14 polyclonal antibody

Catalog # PAB26599

Size 50 ug

## Applications



### Immunohistochemistry (Formalin/PFA-fixed paraffin-embedded sections)

Immunohistochemical (Formalin/PFA-fixed paraffin-embedded sections) staining in human brain, neurons and glia with P2RY14 polyclonal antibody (Cat # PAB26599). Immunohistochemistry of formalin-fixed, paraffin-embedded tissue after heat-induced antigen retrieval.

## Specification

<b>Product Description</b>	Rabbit polyclonal antibody raised against synthetic peptide of P2RY14.
<b>Immunogen</b>	A synthetic peptide corresponding to 16 amino acids from 2nd extracellular domain of human P2RY14.
<b>Host</b>	Rabbit
<b>Reactivity</b>	Human
<b>Specificity</b>	BLAST analysis of the peptide immunogen showed no homology with other human proteins.
<b>Form</b>	Liquid
<b>Purification</b>	Immunoaffinity chromatography
<b>Recommend Usage</b>	Immunohistochemistry (Formalin/PFA-fixed paraffin-embedded sections) (10 ug/mL) The optimal working dilution should be determined by the end user.
<b>Storage Buffer</b>	In PBS (0.09% sodium azide)
<b>Storage Instruction</b>	Store at 4°C. For long term storage store at -80°C. Aliquot to avoid repeated freezing and thawing.

**Note**

This product contains sodium azide: a POISONOUS AND HAZARDOUS SUBSTANCE which should be handled by trained staff only.

## Applications

- Immunohistochemistry (Formalin/PFA-fixed paraffin-embedded sections)

Immunohistochemical (Formalin/PFA-fixed paraffin-embedded sections) staining in human brain, neurons and glia with P2RY14 polyclonal antibody (Cat # PAB26599). Immunohistochemistry of formalin-fixed, paraffin-embedded tissue after heat-induced antigen retrieval.

## Gene Info — P2RY14

**Entrez GeneID** [9934](#)

**Protein Accession#** [Q15391](#)

**Gene Name** P2RY14

**Gene Alias** GPR105, KIAA0001, P2Y14

**Gene Description** purinergic receptor P2Y, G-protein coupled, 14

**Omim ID** [610116](#)

**Gene Ontology** [Hyperlink](#)

**Gene Summary** The product of this gene belongs to the family of G-protein coupled receptors, which contains several receptor subtypes with different pharmacological selectivity for various adenosine and uridine nucleotides. This receptor is a P2Y purinergic receptor for UDP-glucose and other UDP-sugars coupled to G-proteins. It has been implicated in extending the known immune system functions of P2Y receptors by participating in the regulation of the stem cell compartment, and it may also play a role in neuroimmune function. Two transcript variants encoding the same protein have been identified for this gene. [provided by RefSeq]

**Other Designations** G protein coupled receptor for UDP-glucose|G protein-coupled receptor 105|P2Y purinoceptor 14|P2Y(14) receptor|P2Y14 receptor

## Pathway

- [Neuroactive ligand-receptor interaction](#)