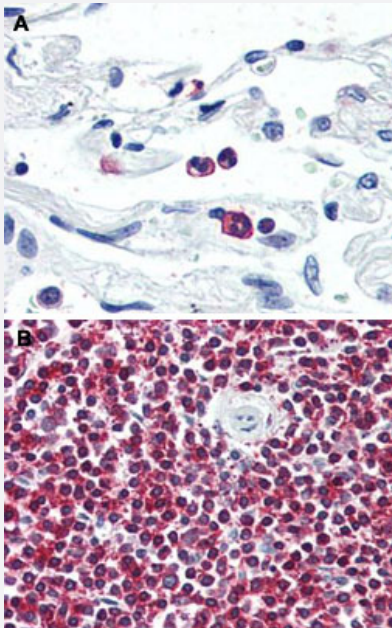


# LGR6 polyclonal antibody

Catalog # PAB26595

Size 50 ug

## Applications



### Immunohistochemistry (Formalin/PFA-fixed paraffin-embedded sections)

Immunohistochemical (Formalin/PFA-fixed paraffin-embedded sections) staining in human neutrophils (A) and human spleen (B) with LGR6 polyclonal antibody (Cat # PAB26595). Immunohistochemistry of formalin-fixed, paraffin-embedded tissue after heat-induced antigen retrieval.

## Specification

<b>Product Description</b>	Rabbit polyclonal antibody raised against synthetic peptide of LGR6.
<b>Immunogen</b>	A synthetic peptide corresponding to 18 amino acids from internal region of human LGR6.
<b>Host</b>	Rabbit
<b>Reactivity</b>	Human
<b>Specificity</b>	BLAST analysis of the peptide immunogen showed no homology with other human proteins.
<b>Form</b>	Liquid
<b>Purification</b>	Immunoaffinity chromatography

<b>Recommend Usage</b>	Immunohistochemistry (Formalin/PFA-fixed paraffin-embedded sections) (10 ug/mL) The optimal working dilution should be determined by the end user.
<b>Storage Buffer</b>	In PBS (0.09% sodium azide)
<b>Storage Instruction</b>	Store at 4°C. For long term storage store at -80°C. Aliquot to avoid repeated freezing and thawing.
<b>Note</b>	This product contains sodium azide: a POISONOUS AND HAZARDOUS SUBSTANCE which should be handled by trained staff only.

## Applications

- Immunohistochemistry (Formalin/PFA-fixed paraffin-embedded sections)

Immunohistochemical (Formalin/PFA-fixed paraffin-embedded sections) staining in human neutrophils (A) and human spleen (B) with LGR6 polyclonal antibody (Cat # PAB26595). Immunohistochemistry of formalin-fixed, paraffin-embedded tissue after heat-induced antigen retrieval.

## Gene Info — LGR6

<b>Entrez GeneID</b>	<a href="#">59352</a>
<b>Protein Accession#</b>	<a href="#">Q9HBX8</a>
<b>Gene Name</b>	LGR6
<b>Gene Alias</b>	FLJ14471, GPCR, VTS20631
<b>Gene Description</b>	leucine-rich repeat-containing G protein-coupled receptor 6
<b>Omim ID</b>	<a href="#">606653</a>
<b>Gene Ontology</b>	<a href="#">Hyperlink</a>
<b>Gene Summary</b>	This gene encodes a member of the leucine-rich repeat-containing subgroup of the G protein-coupled 7-transmembrane protein superfamily. The encoded protein is a glycoprotein hormone receptor with a large N-terminal extracellular domain that contains leucine-rich repeats important for the formation of a horseshoe-shaped interaction motif for ligand binding. Alternative splicing of this gene results in multiple transcript variants. [provided by RefSeq]
<b>Other Designations</b>	OTTHUMP00000038794 OTTHUMP00000038795 gonadotropin receptor