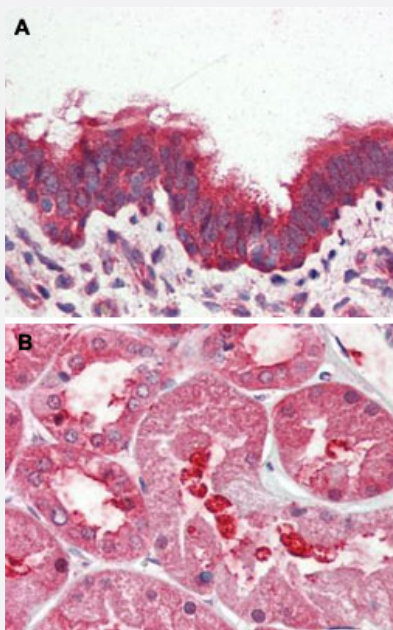


# GPRC6A polyclonal antibody

Catalog # PAB26569

Size 50 ug

## Applications



### Immunohistochemistry (Formalin/PFA-fixed paraffin-embedded sections)

Immunohistochemical (Formalin/PFA-fixed paraffin-embedded sections) staining in human lung, respiratory epithelium (A) and human kidney (B) with GPRC6A polyclonal antibody (Cat # PAB26569). Immunohistochemistry of formalin-fixed, paraffin-embedded tissue after heat-induced antigen retrieval.

## Specification

|                            |   |
|----------------------------|---|
| <b>Product Description</b> | Rabbit polyclonal antibody raised against synthetic peptide of GPRC6A.                                    |
| <b>Immunogen</b>           | A synthetic peptide corresponding to 14 amino acids from N-terminal extracellular domain of human GPRC6A. |
| <b>Host</b>                | Rabbit  |
| <b>Reactivity</b>          | Human   |
| <b>Specificity</b>         | BLAST analysis of the peptide immunogen showed no homology with other human proteins.                     |
| <b>Form</b>                | Liquid  |
| <b>Purification</b>        | Immunoaffinity chromatography   |

|                            |  |
|----------------------------|--|
| <b>Recommend Usage</b>     | Immunohistochemistry (Formalin/PFA-fixed paraffin-embedded sections) (5 ug/mL)<br>The optimal working dilution should be determined by the end user. |
| <b>Storage Buffer</b>      | In PBS (0.09% sodium azide)  |
| <b>Storage Instruction</b> | Store at 4°C. For long term storage store at -80°C.<br>Aliquot to avoid repeated freezing and thawing.   |
| <b>Note</b>                | This product contains sodium azide: a POISONOUS AND HAZARDOUS SUBSTANCE which should be handled by trained staff only.                               |

## Applications

- Immunohistochemistry (Formalin/PFA-fixed paraffin-embedded sections)

Immunohistochemical (Formalin/PFA-fixed paraffin-embedded sections) staining in human lung, respiratory epithelium (A) and human kidney (B) with GPRC6A polyclonal antibody (Cat # PAB26569). Immunohistochemistry of formalin-fixed, paraffin-embedded tissue after heat-induced antigen retrieval.

## Gene Info — GPRC6A

|                           |   |
|---------------------------|---|
| <b>Entrez GeneID</b>      | <a href="#">222545</a>  |
| <b>Protein Accession#</b> | <a href="#">Q5T6X5</a>  |
| <b>Gene Name</b>          | GPRC6A  |
| <b>Gene Alias</b>         | GPCR, bA86F4.3  |
| <b>Gene Description</b>   | G protein-coupled receptor, family C, group 6, member A                             |
| <b>Gene Ontology</b>      | <a href="#">Hyperlink</a>   |
| <b>Gene Summary</b>       | G protein-coupled receptor  |
| <b>Other Designations</b> | OTTHUMP00000017075 predicted with SOSUI analysis seven transmembrane helix receptor |

## Disease

- [Carcinoma](#)
- [Genetic Predisposition to Disease](#)
- [Prostatic Neoplasms](#)