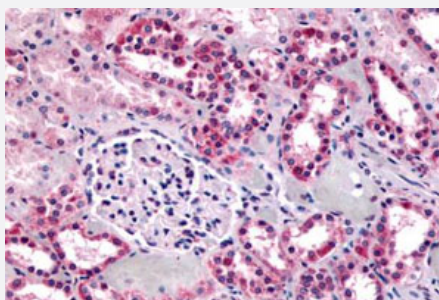


SUCNR1 polyclonal antibody

Catalog # PAB26564

Size 50 ug

Applications



Immunohistochemistry (Formalin/PFA-fixed paraffin-embedded sections)

Immunohistochemical (Formalin/PFA-fixed paraffin-embedded sections) staining in human kidney with SUCNR1 polyclonal antibody (Cat # PAB26564). Immunohistochemistry of formalin-fixed, paraffin-embedded tissue after heat-induced antigen retrieval.

Specification

Product Description	Rabbit polyclonal antibody raised against synthetic peptide of SUCNR1.
Immunogen	A synthetic peptide corresponding to 18 amino acids from C-terminus of human SUCNR1.
Host	Rabbit
Reactivity	Human
Specificity	BLAST analysis of the peptide immunogen showed no homology with other human proteins.
Form	Liquid
Purification	Immunoaffinity chromatography
Recommend Usage	Immunohistochemistry (Formalin/PFA-fixed paraffin-embedded sections) (16 ug/mL) The optimal working dilution should be determined by the end user.
Storage Buffer	In PBS (0.09% sodium azide)
Storage Instruction	Store at 4°C. For long term storage store at -80°C. Aliquot to avoid repeated freezing and thawing.

Note

This product contains sodium azide: a POISONOUS AND HAZARDOUS SUBSTANCE which should be handled by trained staff only.

Applications

- Immunohistochemistry (Formalin/PFA-fixed paraffin-embedded sections)

Immunohistochemical (Formalin/PFA-fixed paraffin-embedded sections) staining in human kidney with SUCNR1 polyclonal antibody (Cat # PAB26564). Immunohistochemistry of formalin-fixed, paraffin-embedded tissue after heat-induced antigen retrieval.

Gene Info — SUCNR1

Entrez GeneID	56670
---------------	-----------------------

Protein Accession#	Q9BXA5
--------------------	------------------------

Gene Name	SUCNR1
-----------	--------

Gene Alias	GPR91
------------	-------

Gene Description	succinate receptor 1
------------------	----------------------

Omim ID	606381
---------	------------------------

Gene Ontology	Hyperlink
---------------	---------------------------

Other Designations	G protein-coupled receptor 91 P2Y purinoceptor 1
--------------------	--