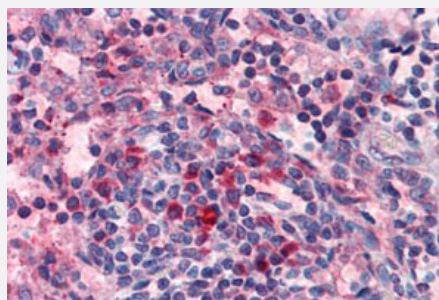


# HRH4 polyclonal antibody

Catalog # PAB26560

Size 50 ug

## Applications



### Immunohistochemistry (Formalin/PFA-fixed paraffin-embedded sections)

Immunohistochemical (Formalin/PFA-fixed paraffin-embedded sections) staining in human lymph node with HRH4 polyclonal antibody (Cat # PAB26560). Immunohistochemistry of formalin-fixed, paraffin-embedded tissue after heat-induced antigen retrieval.

## Specification

<b>Product Description</b>	Rabbit polyclonal antibody raised against synthetic peptide of HRH4.
<b>Immunogen</b>	A synthetic peptide corresponding to 18 amino acids from 2nd extracellular domain of human HRH4.
<b>Host</b>	Rabbit
<b>Reactivity</b>	Human
<b>Specificity</b>	BLAST analysis of the peptide immunogen showed no homology with other human proteins.
<b>Form</b>	Liquid
<b>Purification</b>	Immunoaffinity chromatography
<b>Recommend Usage</b>	Immunohistochemistry (Formalin/PFA-fixed paraffin-embedded sections) (3.6 ug/mL) The optimal working dilution should be determined by the end user.
<b>Storage Buffer</b>	In PBS (0.09% sodium azide)
<b>Storage Instruction</b>	Store at 4°C. For long term storage store at -80°C. Aliquot to avoid repeated freezing and thawing.

**Note**

This product contains sodium azide: a POISONOUS AND HAZARDOUS SUBSTANCE which should be handled by trained staff only.

## Applications

- Immunohistochemistry (Formalin/PFA-fixed paraffin-embedded sections)

Immunohistochemical (Formalin/PFA-fixed paraffin-embedded sections) staining in human lymph node with HRH4 polyclonal antibody (Cat # PAB26560). Immunohistochemistry of formalin-fixed, paraffin-embedded tissue after heat-induced antigen retrieval.

## Gene Info — HRH4

**Entrez GeneID** [59340](#)

**Protein Accession#** [Q9H3N8](#)

**Gene Name** HRH4

**Gene Alias** AXOR35, BG26, GPCR105, GPRv53, H4, H4R, HH4R, MGC133027

**Gene Description** histamine receptor H4

**Omim ID** [606792](#)

**Gene Ontology** [Hyperlink](#)

**Gene Summary** Histamine is a ubiquitous messenger molecule released from mast cells, enterochromaffin-like cells, and neurons. Its various actions are mediated by a family of histamine receptors, which are a subset of the G-protein coupled receptor superfamily. This gene encodes a histamine receptor that is predominantly expressed in haematopoietic cells. The protein is thought to play a role in inflammation and allergy responses. Multiple transcript variants encoding different isoforms have been found for this gene. [provided by RefSeq]

**Other Designations** histamine H4 receptor

## Pathway

- [Neuroactive ligand-receptor interaction](#)

## Disease

- [Cognition](#)
- [Dermatitis](#)
- [Genetic Predisposition to Disease](#)
- [Lupus Erythematosus](#)
- [Schizophrenia](#)
- [Schizophrenic Psychology](#)
- [Weight Gain](#)