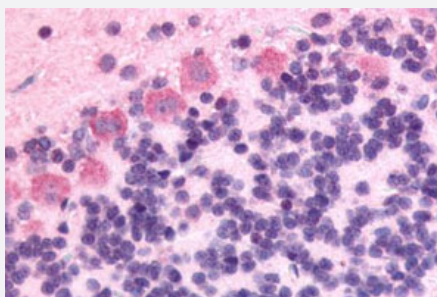


# GPR89A polyclonal antibody

Catalog # PAB26555

Size 50 ug

## Applications



### Immunohistochemistry (Formalin/PFA-fixed paraffin-embedded sections)

Immunohistochemical (Formalin/PFA-fixed paraffin-embedded sections) staining in rat brain, Purkinje neurons with GPR89A polyclonal antibody (Cat # PAB26555). Immunohistochemistry of formalin-fixed, paraffin-embedded tissue after heat-induced antigen retrieval.

## Specification

<b>Product Description</b>	Rabbit polyclonal antibody raised against synthetic peptide of GPR89A.
<b>Immunogen</b>	A synthetic peptide corresponding to 18 amino acids at 3rd cytoplasmic domain of human GPR89A.
<b>Host</b>	Rabbit
<b>Reactivity</b>	Bovine, Chicken, Dog, Hamster, Human, Monkey, Mouse, Pig, Rat
<b>Specificity</b>	BLAST analysis of the peptide immunogen showed no homology with other human proteins.
<b>Form</b>	Liquid
<b>Purification</b>	Immunoaffinity chromatography
<b>Recommend Usage</b>	Immunohistochemistry (Formalin/PFA-fixed paraffin-embedded sections) (6 ug/mL) The optimal working dilution should be determined by the end user.
<b>Storage Buffer</b>	In PBS (0.09% sodium azide)
<b>Storage Instruction</b>	Store at 4°C. For long term storage store at -80°C. Aliquot to avoid repeated freezing and thawing.

**Note**

This product contains sodium azide: a POISONOUS AND HAZARDOUS SUBSTANCE which should be handled by trained staff only.

## Applications

- Immunohistochemistry (Formalin/PFA-fixed paraffin-embedded sections)

Immunohistochemical (Formalin/PFA-fixed paraffin-embedded sections) staining in rat brain, Purkinje neurons with GPR89A polyclonal antibody (Cat # PAB26555). Immunohistochemistry of formalin-fixed, paraffin-embedded tissue after heat-induced antigen retrieval.

## Gene Info — GPR89A

Entrez GeneID	<a href="#">653519</a>
Protein Accession#	<a href="#">NP_057418.1</a>
Gene Name	GPR89A
Gene Alias	FLJ10492, FLJ11696, FLJ36909, MGC688, MGC87324, UNQ192
Gene Description	G protein-coupled receptor 89A
Gene Ontology	<a href="#">Hyperlink</a>
Gene Summary	GPR89A is a nearly identical copy of the GPR89B gene (MIM 612806).[supplied by OMIM]
Other Designations	-