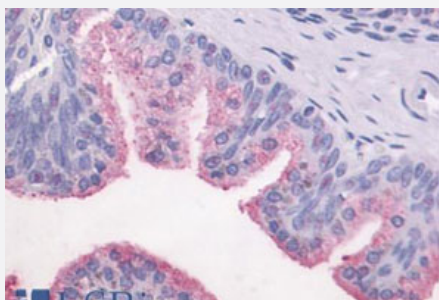


GPR87 polyclonal antibody

Catalog # PAB26548

Size 50 ug

Applications



Immunohistochemistry (Formalin/PFA-fixed paraffin-embedded sections)

Immunohistochemical (Formalin/PFA-fixed paraffin-embedded sections) staining in human prostate, epithelium with GPR87 polyclonal antibody (Cat # PAB26548). Immunohistochemistry of formalin-fixed, paraffin-embedded tissue after heat-induced antigen retrieval.

Specification

Product Description	Rabbit polyclonal antibody raised against synthetic peptide of GPR87.
Immunogen	A synthetic peptide corresponding to 19 amino acids at C-terminus of human GPR87.
Host	Rabbit
Reactivity	Bovine, Dog, Hamster, Horse, Human, Monkey, Mouse, Pig, Rabbit, Rat
Specificity	BLAST analysis of the peptide immunogen showed no homology with other human proteins.
Form	Liquid
Purification	Immunoaffinity chromatography
Recommend Usage	Immunohistochemistry (Formalin/PFA-fixed paraffin-embedded sections) (4 ug/mL) The optimal working dilution should be determined by the end user.
Storage Buffer	In PBS (0.09% sodium azide)
Storage Instruction	Store at 4°C. For long term storage store at -80°C. Aliquot to avoid repeated freezing and thawing.

Note

This product contains sodium azide: a POISONOUS AND HAZARDOUS SUBSTANCE which should be handled by trained staff only.

Applications

- Immunohistochemistry (Formalin/PFA-fixed paraffin-embedded sections)

Immunohistochemical (Formalin/PFA-fixed paraffin-embedded sections) staining in human prostate, epithelium with GPR87 polyclonal antibody (Cat # PAB26548). Immunohistochemistry of formalin-fixed, paraffin-embedded tissue after heat-induced antigen retrieval.

Gene Info — GPR87

Entrez GeneID	53836
---------------	-----------------------

Protein Accession#	Q9BY21
--------------------	------------------------

Gene Name	GPR87
-----------	-------

Gene Alias	FKSG78, GPR95, KPG_002, MGC131898
------------	-----------------------------------

Gene Description	G protein-coupled receptor 87
------------------	-------------------------------

Omim ID	606379
---------	------------------------

Gene Ontology	Hyperlink
---------------	---------------------------

Gene Summary	G protein-coupled receptors play a role in cell communication. They are characterized by an extra cellular N terminus, 7 transmembrane regions, and an intracellular C terminus.[supplied by OMIM]
--------------	----------------------------------------------------------------------------------------------------------------------------------------------------------------------------------------------------

Other Designations	G protein-coupled receptor 95 orphan GPCR 87
--------------------	----------------------------------------------

Disease

- [Genetic Predisposition to Disease](#)
- [Hyperparathyroidism](#)