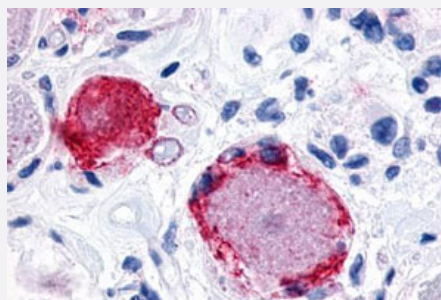


MRGPRX3 polyclonal antibody

Catalog # PAB26508

Size 50 ug

Applications



Immunohistochemistry (Formalin/PFA-fixed paraffin-embedded sections)

Immunohistochemical (Formalin/PFA-fixed paraffin-embedded sections) staining in human spinal cord, dorsal root ganglion with MRGPRX3 polyclonal antibody (Cat # PAB26508). Immunohistochemistry of formalin-fixed, paraffin-embedded tissue after heat-induced antigen retrieval.

Specification

Product Description	Rabbit polyclonal antibody raised against synthetic peptide of MRGPRX3.
Immunogen	A synthetic peptide corresponding to 16 amino acids at 3rd extracellular domain of human MRGPRX3.
Host	Rabbit
Reactivity	Human, Monkey
Specificity	BLAST analysis of the peptide immunogen showed no homology with other human proteins, except RHCG (44%).
Form	Liquid
Purification	Immunoaffinity chromatography
Recommend Usage	Immunohistochemistry (Formalin/PFA-fixed paraffin-embedded sections) (16-32 ug/mL) The optimal working dilution should be determined by the end user.
Storage Buffer	In PBS (0.09% sodium azide)
Storage Instruction	Store at 4°C. For long term storage store at -80°C. Aliquot to avoid repeated freezing and thawing.

Note

This product contains sodium azide: a POISONOUS AND HAZARDOUS SUBSTANCE which should be handled by trained staff only.

Applications

- Immunohistochemistry (Formalin/PFA-fixed paraffin-embedded sections)

Immunohistochemical (Formalin/PFA-fixed paraffin-embedded sections) staining in human spinal cord, dorsal root ganglion with MRGPRX3 polyclonal antibody (Cat # PAB26508). Immunohistochemistry of formalin-fixed, paraffin-embedded tissue after heat-induced antigen retrieval.

Gene Info — MRGPRX3

Entrez GeneID	117195
---------------	------------------------

Protein Accession#	Q96LB0
--------------------	------------------------

Gene Name	MRGPRX3
-----------	---------

Gene Alias	GPCR, MRGX3, SNSR1
------------	--------------------

Gene Description	MAS-related GPR, member X3
------------------	----------------------------

Omim ID	607229
---------	------------------------

Gene Ontology	Hyperlink
---------------	---------------------------

Gene Summary	This gene encodes a member of the mas-related/ sensory neuron specific subfamily of G protein coupled receptors. The encoded protein may be involved in sensory neuron regulation and in the modulation of pain. [provided by RefSeq]
--------------	---

Other Designations	G protein-coupled receptor MRGX3 G protein-coupled receptor SNSR1 G protein-coupled receptor SNSR2 mas-related GPCR member X3
--------------------	---