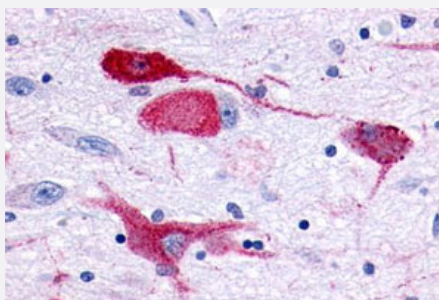


GPR83 polyclonal antibody

Catalog # PAB26506

Size 50 ug

Applications



Immunohistochemistry (Formalin/PFA-fixed paraffin-embedded sections)

Immunohistochemical (Formalin/PFA-fixed paraffin-embedded sections) staining in human brain, neurons and glia with GPR83 polyclonal antibody (Cat # PAB26506). Immunohistochemistry of formalin-fixed, paraffin-embedded tissue after heat-induced antigen retrieval.

Specification

Product Description	Rabbit polyclonal antibody raised against synthetic peptide of GPR83.
Immunogen	A synthetic peptide corresponding to 14 amino acids at 1st extracellular domain of human GPR83.
Host	Rabbit
Reactivity	Human
Specificity	BLAST analysis of the peptide immunogen showed no homology with other human proteins.
Form	Liquid
Purification	Immunoaffinity chromatography
Recommend Usage	Immunohistochemistry (Formalin/PFA-fixed paraffin-embedded sections) (17 ug/mL) The optimal working dilution should be determined by the end user.
Storage Buffer	In PBS (0.09% sodium azide)
Storage Instruction	Store at 4°C. For long term storage store at -80°C. Aliquot to avoid repeated freezing and thawing.

Note

This product contains sodium azide: a POISONOUS AND HAZARDOUS SUBSTANCE which should be handled by trained staff only.

Applications

- Immunohistochemistry (Formalin/PFA-fixed paraffin-embedded sections)

Immunohistochemical (Formalin/PFA-fixed paraffin-embedded sections) staining in human brain, neurons and glia with GPR83 polyclonal antibody (Cat # PAB26506). Immunohistochemistry of formalin-fixed, paraffin-embedded tissue after heat-induced antigen retrieval.

Gene Info — GPR83

Entrez GeneID	10888
Protein Accession#	Q9NYM4
Gene Name	GPR83
Gene Alias	GIR, GPR72
Gene Description	G protein-coupled receptor 83
Omim ID	605569
Gene Ontology	Hyperlink
Other Designations	G protein-coupled receptor 72 G-protein coupled receptor 72 glucocorticoid induced receptor

Pathway

- [Neuroactive ligand-receptor interaction](#)