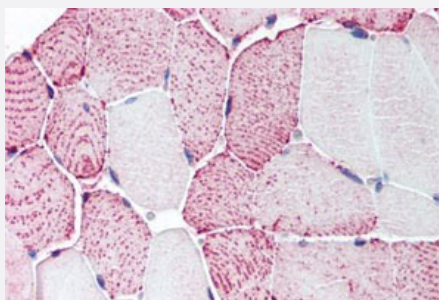


RXFP2 polyclonal antibody

Catalog # PAB26504

Size 50 ug

Applications



Immunohistochemistry (Formalin/PFA-fixed paraffin-embedded sections)

Immunohistochemical (Formalin/PFA-fixed paraffin-embedded sections) staining in human skeletal muscle with RXFP2 polyclonal antibody (Cat # PAB26504). Immunohistochemistry of formalin-fixed, paraffin-embedded tissue after heat-induced antigen retrieval.

Specification

Product Description	Rabbit polyclonal antibody raised against synthetic peptide of RXFP2.
Immunogen	A synthetic peptide corresponding to 14 amino acids at 3rd cytoplasmic domain of human RXFP2.
Host	Rabbit
Reactivity	Human, Mouse
Specificity	BLAST analysis of the peptide immunogen showed no homology with other human proteins.
Form	Liquid
Purification	Immunoaffinity chromatography
Recommend Usage	Immunohistochemistry (Formalin/PFA-fixed paraffin-embedded sections) (7 ug/mL) The optimal working dilution should be determined by the end user.
Storage Buffer	In PBS (0.09% sodium azide)
Storage Instruction	Store at 4°C. For long term storage store at -80°C. Aliquot to avoid repeated freezing and thawing.

Note

This product contains sodium azide: a POISONOUS AND HAZARDOUS SUBSTANCE which should be handled by trained staff only.

Applications

- Immunohistochemistry (Formalin/PFA-fixed paraffin-embedded sections)

Immunohistochemical (Formalin/PFA-fixed paraffin-embedded sections) staining in human skeletal muscle with RXFP2 polyclonal antibody (Cat # PAB26504). Immunohistochemistry of formalin-fixed, paraffin-embedded tissue after heat-induced antigen retrieval.

Gene Info — RXFP2

Entrez GeneID [122042](#)

Protein Accession# [Q8WXD0](#)

Gene Name RXFP2

Gene Alias GPR106, GREAT, INSL3R, LGR8, LGR8.1, RXFP2

Gene Description relaxin/insulin-like family peptide receptor 2

Omim ID [219050 606655](#)

Gene Ontology [Hyperlink](#)

Gene Summary The receptors for glycoprotein hormones such as follicle-stimulating hormone (FSH; see MIM 136530) and thyroid-stimulating hormone (TSH; see MIM 188540) are G protein-coupled, 7-transmembrane receptors (GPCRs) with large N-terminal extracellular domains. Leucine-rich repeat (LRR)-containing GPCRs (LGRs) form a subgroup of the GPCR superfamily.[supplied by OMIM]

Other Designations G protein coupled receptor affecting testicular descent|OTTHUMP00000018219|leucine-rich repeat-containing G protein-coupled receptor 8

Pathway

- [Neuroactive ligand-receptor interaction](#)

Disease

- [Cryptorchidism](#)

- [Klinefelter Syndrome](#)