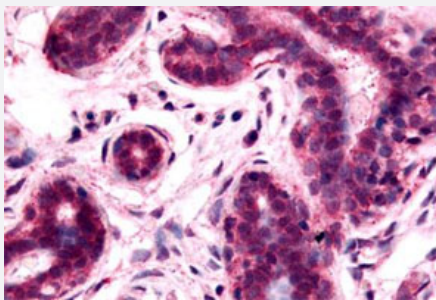


GPRC5A polyclonal antibody

Catalog # PAB26483

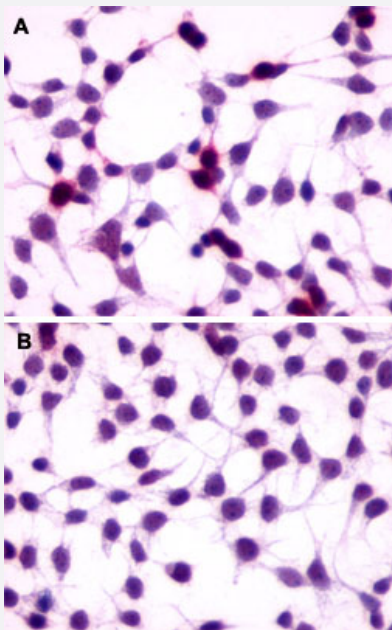
Size 50 ug

Applications



Immunohistochemistry (Formalin/PFA-fixed paraffin-embedded sections)

Immunohistochemical (Formalin/PFA-fixed paraffin-embedded sections) staining in human breast with GPRC5A polyclonal antibody (Cat # PAB26483). Immunohistochemistry of formalin-fixed, paraffin-embedded tissue after heat-induced antigen retrieval.



Immunocytochemistry

Immunocytochemistry (ICC) staining of HEK293 human embryonic kidney cells transfected (A) or untransfected (B) with GPRC5A. Using GPRC5A polyclonal antibody (Cat # PAB26483).

Specification

Product Description

Rabbit polyclonal antibody raised against synthetic peptide of GPRC5A.

Immunogen

A synthetic peptide corresponding to 16 amino acids at N-terminal extracellular domain of human GPRC5A.

Host	Rabbit
Reactivity	Human
Specificity	BLAST analysis of the peptide immunogen showed no homology with other human proteins.
Form	Liquid
Purification	Immunoaffinity chromatography
Recommend Usage	Immunohistochemistry (Formalin/PFA-fixed paraffin-embedded sections) (8-38 ug/mL) The optimal working dilution should be determined by the end user.
Storage Buffer	In PBS (0.09% sodium azide)
Storage Instruction	Store at 4°C. For long term storage store at -80°C. Aliquot to avoid repeated freezing and thawing.
Note	This product contains sodium azide: a POISONOUS AND HAZARDOUS SUBSTANCE which should be handled by trained staff only.

Applications

- Immunohistochemistry (Formalin/PFA-fixed paraffin-embedded sections)

Immunohistochemical (Formalin/PFA-fixed paraffin-embedded sections) staining in human breast with GPRC5A polyclonal antibody (Cat # PAB26483). Immunohistochemistry of formalin-fixed, paraffin-embedded tissue after heat-induced antigen retrieval.

- Immunocytochemistry

Immunocytochemistry (ICC) staining of HEK293 human embryonic kidney cells transfected (A) or untransfected (B) with GPRC5A. Using GPRC5A polyclonal antibody (Cat # PAB26483).

Gene Info — GPRC5A

Entrez GeneID	9052
Protein Accession#	Q8NFJ5
Gene Name	GPRC5A
Gene Alias	GPCR5A, RAI3, RAIG1
Gene Description	G protein-coupled receptor, family C, group 5, member A
Omim ID	604138

Gene Ontology[Hyperlink](#)**Gene Summary**

This gene encodes a member of the type 3 G protein-coupling receptor family, characterized by the signature 7-transmembrane domain motif. The encoded protein may be involved in interaction between retinoic acid and G protein signalling pathways. Retinoic acid plays a critical role in development, cellular growth, and differentiation. This gene may play a role in embryonic development and epithelial cell differentiation. [provided by RefSeq]

Other Designations

retinoic acid induced 3|retinoic acid responsive

Disease

- [Kidney Failure](#)