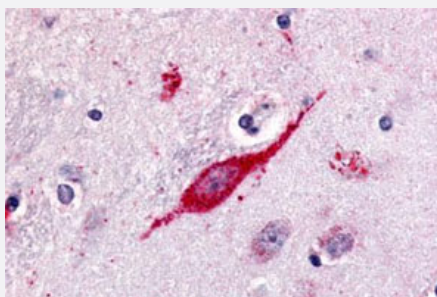


GPR85 polyclonal antibody

Catalog # PAB26481

Size 50 ug

Applications



Immunohistochemistry (Formalin/PFA-fixed paraffin-embedded sections)

Immunohistochemical (Formalin/PFA-fixed paraffin-embedded sections) staining in human brain, neuron with GPR85 polyclonal antibody (Cat # PAB26481). Immunohistochemistry of formalin-fixed, paraffin-embedded tissue after heat-induced antigen retrieval.

Specification

Product Description	Rabbit polyclonal antibody raised against synthetic peptide of GPR85.
Immunogen	A synthetic peptide corresponding to 20 amino acids at C-terminus of human GPR85.
Host	Rabbit
Reactivity	Bovine, Chicken, Dog, Hamster, Horse, Human, Monkey, Mouse, Pig, Rabbit, Rat, Zebra fish
Specificity	BLAST analysis of the peptide immunogen showed no homology with other human proteins, except NLRC3 (40%).
Form	Liquid
Purification	Immunoaffinity chromatography
Recommend Usage	Immunohistochemistry (Formalin/PFA-fixed paraffin-embedded sections) (9-17 ug/mL) The optimal working dilution should be determined by the end user.
Storage Buffer	In PBS (0.09% sodium azide)
Storage Instruction	Store at 4°C. For long term storage store at -80°C. Aliquot to avoid repeated freezing and thawing.

Note

This product contains sodium azide: a POISONOUS AND HAZARDOUS SUBSTANCE which should be handled by trained staff only.

Applications

- Immunohistochemistry (Formalin/PFA-fixed paraffin-embedded sections)

Immunohistochemical (Formalin/PFA-fixed paraffin-embedded sections) staining in human brain, neuron with GPR85 polyclonal antibody (Cat # PAB26481). Immunohistochemistry of formalin-fixed, paraffin-embedded tissue after heat-induced antigen retrieval.

- Immunocytochemistry

Gene Info — GPR85

Entrez GeneID [54329](#)

Protein Accession# [P60893](#)

Gene Name GPR85

Gene Alias SREB, SREB2

Gene Description G protein-coupled receptor 85

Omim ID [605188](#)

Gene Ontology [Hyperlink](#)

Gene Summary Members of the G protein-coupled receptor (GPCR) family, such as GPR85, have a similar structure characterized by 7 transmembrane domains. Activation of GPCRs by extracellular stimuli, such as neurotransmitters, hormones, or light, induces an intracellular signaling cascade mediated by heterotrimeric GTP-binding proteins, or G proteins (Matsumoto et al., 2000 [PubMed 10833454]). [supplied by OMIM]

Other Designations seven transmembrane helix receptor|super conserved receptor expressed in brain 2