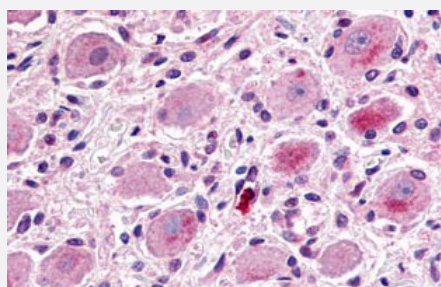


# MRGPRX1 polyclonal antibody

Catalog # PAB26476

Size 50 ug

## Applications



### Immunohistochemistry (Formalin/PFA-fixed paraffin-embedded sections)

Immunohistochemical (Formalin/PFA-fixed paraffin-embedded sections) staining in human ganglion cells and schwann cells with MRGPRX1 polyclonal antibody (Cat # PAB26476). Immunohistochemistry of formalin-fixed, paraffin-embedded tissue after heat-induced antigen retrieval.

## Specification

<b>Product Description</b>	Rabbit polyclonal antibody raised against synthetic peptide of MRGPRX1.
<b>Immunogen</b>	A synthetic peptide corresponding to 14 amino acids at N-terminal extracellular domain of human MRGPRX1.
<b>Host</b>	Rabbit
<b>Reactivity</b>	Human, Monkey
<b>Specificity</b>	BLAST analysis of the peptide immunogen showed no homology with other human proteins, except MRGPRX3 (71%).
<b>Form</b>	Liquid
<b>Purification</b>	Immunoaffinity chromatography
<b>Recommend Usage</b>	Immunohistochemistry (Formalin/PFA-fixed paraffin-embedded sections) (12 ug/mL) The optimal working dilution should be determined by the end user.
<b>Storage Buffer</b>	In PBS (0.09% sodium azide)
<b>Storage Instruction</b>	Store at 4°C. For long term storage store at -80°C. Aliquot to avoid repeated freezing and thawing.

**Note**

This product contains sodium azide: a POISONOUS AND HAZARDOUS SUBSTANCE which should be handled by trained staff only.

## Applications

- Western Blot
- Immunohistochemistry (Formalin/PFA-fixed paraffin-embedded sections)

Immunohistochemical (Formalin/PFA-fixed paraffin-embedded sections) staining in human ganglion cells and schwann cells with MRGPRX1 polyclonal antibody (Cat # PAB26476). Immunohistochemistry of formalin-fixed, paraffin-embedded tissue after heat-induced antigen retrieval.

- Immunocytochemistry

## Gene Info — MRGPRX1

**Entrez GeneID** [259249](#)

**Protein Accession#** [Q96LB2](#)

**Gene Name** MRGPRX1

**Gene Alias** GPCR, MRGX1, SNSR4

**Gene Description** MAS-related GPR, member X1

**Omim ID** [607227](#)

**Gene Ontology** [Hyperlink](#)

**Gene Summary** O

**Other Designations** G protein-coupled receptor MRGX1|G protein-coupled receptor SNSR3