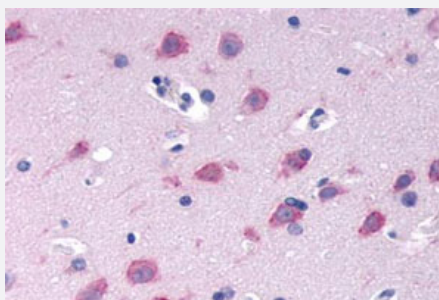


GPRC6A polyclonal antibody

Catalog # PAB26472

Size 50 ug

Applications



Immunohistochemistry (Formalin/PFA-fixed paraffin-embedded sections)

Immunohistochemical (Formalin/PFA-fixed paraffin-embedded sections) staining in human brain, neurons and glia with GPRC6A polyclonal antibody (Cat # PAB26472). Immunohistochemistry of formalin-fixed, paraffin-embedded tissue after heat-induced antigen retrieval.

Specification

Product Description	Rabbit polyclonal antibody raised against synthetic peptide of GPRC6A.
Immunogen	A synthetic peptide corresponding to 17 amino acids at N-terminal extracellular domain of human GPRC6A.
Host	Rabbit
Reactivity	Human, Monkey
Specificity	BLAST analysis of the peptide immunogen showed no homology with other human proteins, except NBPF3 (59%).
Form	Liquid
Purification	Immunoaffinity chromatography
Recommend Usage	Immunohistochemistry (Formalin/PFA-fixed paraffin-embedded sections) (11 ug/mL) The optimal working dilution should be determined by the end user.
Storage Buffer	In PBS (0.09% sodium azide)
Storage Instruction	Store at 4°C. For long term storage store at -80°C. Aliquot to avoid repeated freezing and thawing.

Note

This product contains sodium azide: a POISONOUS AND HAZARDOUS SUBSTANCE which should be handled by trained staff only.

Applications

- Immunohistochemistry (Formalin/PFA-fixed paraffin-embedded sections)

Immunohistochemical (Formalin/PFA-fixed paraffin-embedded sections) staining in human brain, neurons and glia with GPRC6A polyclonal antibody (Cat # PAB26472). Immunohistochemistry of formalin-fixed, paraffin-embedded tissue after heat-induced antigen retrieval.

Gene Info — GPRC6A

Entrez GeneID	222545
Protein Accession#	Q5T6X5
Gene Name	GPRC6A
Gene Alias	GPCR, bA86F4.3
Gene Description	G protein-coupled receptor, family C, group 6, member A
Gene Ontology	Hyperlink
Gene Summary	G protein-coupled receptor
Other Designations	OTTHUMP00000017075 predicted with SOSUI analysis seven transmembrane helix receptor

Disease

- [Carcinoma](#)
- [Genetic Predisposition to Disease](#)
- [Prostatic Neoplasms](#)