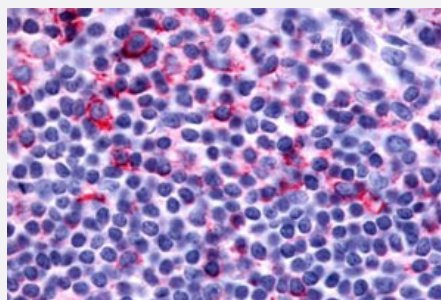


LTB4R2 polyclonal antibody

Catalog # PAB26469

Size 50 ug

Applications



Immunohistochemistry (Formalin/PFA-fixed paraffin-embedded sections)

Immunohistochemical (Formalin/PFA-fixed paraffin-embedded sections) staining in human tonsil with LTB4R2 polyclonal antibody (Cat # PAB26469). Immunohistochemistry of formalin-fixed, paraffin-embedded tissue after heat-induced antigen retrieval.

Specification

Product Description	Rabbit polyclonal antibody raised against synthetic peptide of LTB4R2.
Immunogen	A synthetic peptide corresponding to 19 amino acids at N-terminal extracellular domain of human LTB4R2.
Host	Rabbit
Reactivity	Human
Specificity	BLAST analysis of the peptide immunogen showed no homology with other human proteins, except PPM2C (47%).
Form	Liquid
Purification	Immunoaffinity chromatography
Recommend Usage	Immunohistochemistry (Formalin/PFA-fixed paraffin-embedded sections) (12 ug/mL) The optimal working dilution should be determined by the end user.
Storage Buffer	In PBS (0.09% sodium azide)
Storage Instruction	Store at 4°C. For long term storage store at -80°C. Aliquot to avoid repeated freezing and thawing.

Note

This product contains sodium azide: a POISONOUS AND HAZARDOUS SUBSTANCE which should be handled by trained staff only.

Applications

- Immunohistochemistry (Formalin/PFA-fixed paraffin-embedded sections)

Immunohistochemical (Formalin/PFA-fixed paraffin-embedded sections) staining in human tonsil with LTB4R2 polyclonal antibody (Cat # PAB26469). Immunohistochemistry of formalin-fixed, paraffin-embedded tissue after heat-induced antigen retrieval.

Gene Info — LTB4R2

Entrez GeneID	56413
---------------	-----------------------

Protein Accession#	Q9NPC1
--------------------	------------------------

Gene Name	LTB4R2
-----------	--------

Gene Alias	BLT2, BLTR2, JULF2, KPG_004, NOP9
------------	-----------------------------------

Gene Description	leukotriene B4 receptor 2
------------------	---------------------------

Omim ID	605773
---------	------------------------

Gene Ontology	Hyperlink
---------------	---------------------------

Other Designations	leukotriene B4 receptor BLT2 seven transmembrane receptor BLTR2
--------------------	---

Pathway

- [Calcium signaling pathway](#)
- [Neuroactive ligand-receptor interaction](#)

Disease

- [Atherosclerosis](#)
- [Carotid Artery Diseases](#)