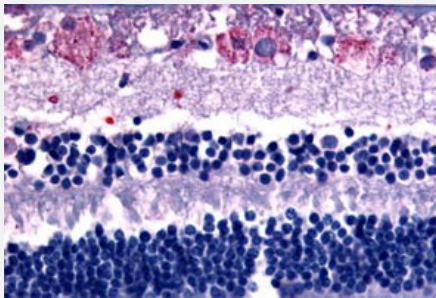


GPR75 polyclonal antibody

Catalog # PAB26456

Size 50 ug

Applications



Immunohistochemistry (Formalin/PFA-fixed paraffin-embedded sections)

Immunohistochemical (Formalin/PFA-fixed paraffin-embedded sections) staining in human eye, retina with GPR75 polyclonal antibody (Cat # PAB26456). Immunohistochemistry of formalin-fixed, paraffin-embedded tissue after heat-induced antigen retrieval.

Specification

Product Description	Rabbit polyclonal antibody raised against synthetic peptide of GPR75.
Immunogen	A synthetic peptide corresponding to 19 amino acids at C-terminus of human GPR75.
Host	Rabbit
Reactivity	Bovine, Chicken, Hamster, Horse, Human, Monkey, Pig, Rabbit, Rat
Specificity	BLAST analysis of the peptide immunogen showed no homology with other human proteins.
Form	Liquid
Purification	Immunoaffinity chromatography
Recommend Usage	Immunohistochemistry (Formalin/PFA-fixed paraffin-embedded sections) (14 ug/mL) The optimal working dilution should be determined by the end user.
Storage Buffer	In PBS (0.09% sodium azide)
Storage Instruction	Store at 4°C. For long term storage store at -80°C. Aliquot to avoid repeated freezing and thawing.

Note

This product contains sodium azide: a POISONOUS AND HAZARDOUS SUBSTANCE which should be handled by trained staff only.

Applications

- Immunohistochemistry (Formalin/PFA-fixed paraffin-embedded sections)

Immunohistochemical (Formalin/PFA-fixed paraffin-embedded sections) staining in human eye, retina with GPR75 polyclonal antibody (Cat # PAB26456). Immunohistochemistry of formalin-fixed, paraffin-embedded tissue after heat-induced antigen retrieval.

Gene Info — GPR75

Entrez GeneID	10936
Protein Accession#	O95800
Gene Name	GPR75
Gene Alias	GPR-chr2, WI-31133
Gene Description	G protein-coupled receptor 75
Omim ID	606704
Gene Ontology	Hyperlink
Gene Summary	GPR75 is a member of the G protein-coupled receptor family. GPRs are cell surface receptors that activate guanine-nucleotide binding proteins upon the binding of a ligand.[supplied by OMIM]
Other Designations	OTTHUMP00000159608