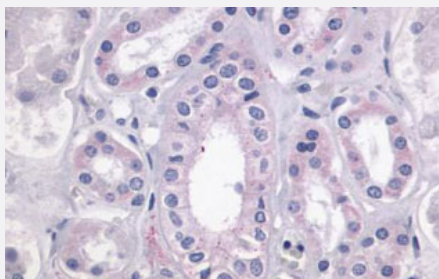


LPAR4 polyclonal antibody

Catalog # PAB26426

Size 50 ug

Applications



Immunohistochemistry (Formalin/PFA-fixed paraffin-embedded sections)

Immunohistochemical (Formalin/PFA-fixed paraffin-embedded sections) staining in human kidney with LPAR4 polyclonal antibody (Cat # PAB26426). Immunohistochemistry of formalin-fixed, paraffin-embedded tissue after heat-induced antigen retrieval.

Specification

Product Description	Rabbit polyclonal antibody raised against synthetic peptide of LPAR4.
Immunogen	A synthetic peptide corresponding to 17 amino acids at 3rd cytoplasmic domain of human LPAR4.
Host	Rabbit
Reactivity	Dog, Hamster, Horse, Human, Monkey, Mouse, Rabbit, Rat
Specificity	BLAST analysis of the peptide immunogen showed no homology with other human proteins.
Form	Liquid
Purification	Immunoaffinity chromatography
Recommend Usage	Immunohistochemistry (Formalin/PFA-fixed paraffin-embedded sections) (4 ug/mL) The optimal working dilution should be determined by the end user.
Storage Buffer	In PBS (0.09% sodium azide)
Storage Instruction	Store at 4°C. For long term storage store at -80°C. Aliquot to avoid repeated freezing and thawing.

Note

This product contains sodium azide: a POISONOUS AND HAZARDOUS SUBSTANCE which should be handled by trained staff only.

Applications

- Immunohistochemistry (Formalin/PFA-fixed paraffin-embedded sections)

Immunohistochemical (Formalin/PFA-fixed paraffin-embedded sections) staining in human kidney with LPAR4 polyclonal antibody (Cat # PAB26426). Immunohistochemistry of formalin-fixed, paraffin-embedded tissue after heat-induced antigen retrieval.

Gene Info — LPAR4

Entrez GeneID	2846
---------------	----------------------

Protein Accession#	Q99677
--------------------	------------------------

Gene Name	LPAR4
-----------	-------

Gene Alias	GPR23, LPA4, P2RY9, P2Y5-LIKE, P2Y9
------------	-------------------------------------

Gene Description	lysophosphatidic acid receptor 4
------------------	----------------------------------

Omim ID	300086
---------	------------------------

Gene Ontology	Hyperlink
---------------	---------------------------

Gene Summary	This gene encodes a member of the lysophosphatidic acid receptor family. It may also be related to the P2Y receptors, a family of receptors that bind purine and pyrimidine nucleotides and are coupled to G proteins. The encoded protein may play a role in monocytic differentiation. [provided by RefSeq]
--------------	---------------------------------------------------------------------------------------------------------------------------------------------------------------------------------------------------------------------------------------------------------------------------------------------------------------

Other Designations	G protein-coupled receptor 23
--------------------	-------------------------------

Pathway

- [Neuroactive ligand-receptor interaction](#)